

YASKAWA

YASXTOUCH – THE DIAGNOSIS TOOL

YASXTOUCH INDUSTRY 4.0

YasXtouch is a comprehensive diagnostic tool.



Compatible with the following controller generations:

Controlled by
DX100

Controlled by
FS100

Controlled by
DX200

Controlled by
NX100

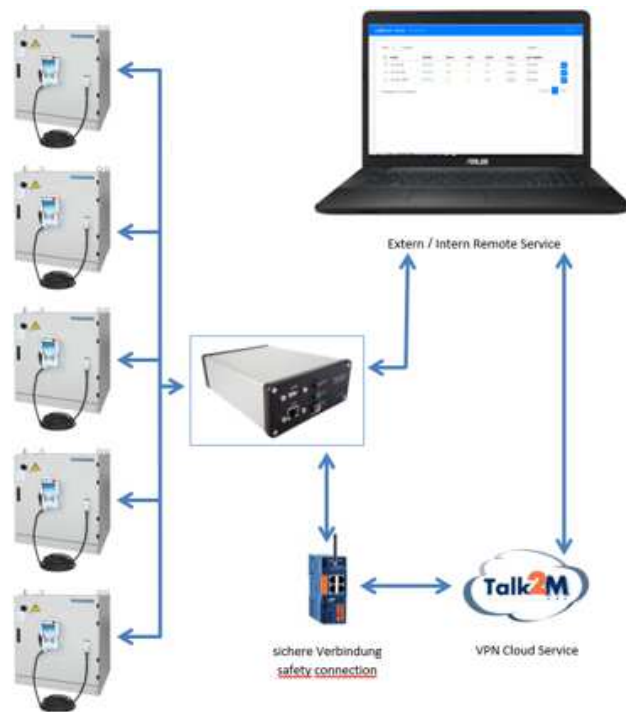
Controlled by
XRC

Controlled by
YRC1000

YASXTOUCH MAKES INDUSTRY 4.0

- YasXtouch serves the expert for error analysis and preventive maintenance by providing the corresponding data.
- With YasXtouch, a lot of attention was paid to practice-oriented operation and functionality.
- Test installations at different customers and system integrators have influenced the haptics and the range of functions through the feedback and suggestions.

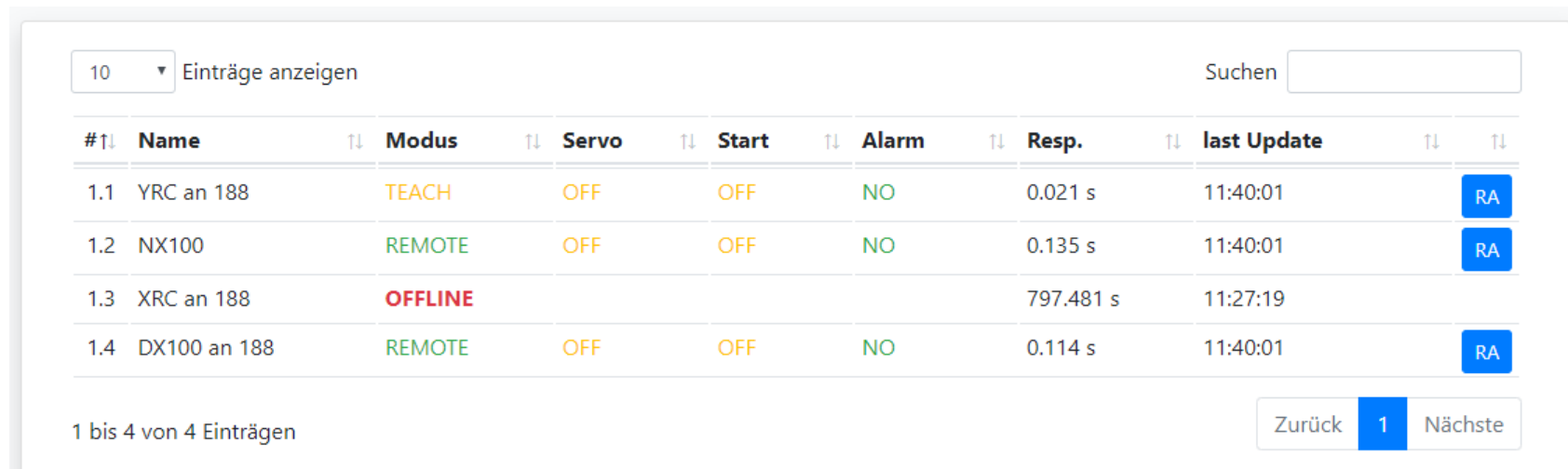
YASXTOUCH – INSTALLATION EXPAMPLE



- Up to 15 YASKAWA Motoman controllers
- Unlimited number of YasXTouch servers
- Web-based operation via standard PC
- VPN is installed by the customer to ensure in-house data security
- YasXTouch can be securely stored in the server cabinet
- Hierarchically configurable access via users and groups

YASXTOUCH - HOME

The home screen provides the user with a quick overview of the networked robot controllers. By networking the YasXTouch servers, an unlimited number of robot controllers can be displayed.



The screenshot shows a web interface for monitoring robot controllers. At the top left, there is a dropdown menu set to '10' and the text 'Einträge anzeigen'. To the right is a search bar labeled 'Suchen'. Below this is a table with columns: '#', 'Name', 'Modus', 'Servo', 'Start', 'Alarm', 'Resp.', and 'last Update'. Each column has a double-headed arrow icon. The table contains four rows of data. The first row is '1.1 YRC an 188' with 'TEACH' mode, 'OFF' servo, 'OFF' start, 'NO' alarm, '0.021 s' response, and '11:40:01' last update. The second row is '1.2 NX100' with 'REMOTE' mode, 'OFF' servo, 'OFF' start, 'NO' alarm, '0.135 s' response, and '11:40:01' last update. The third row is '1.3 XRC an 188' with 'OFFLINE' mode, no servo or start data, no alarm, '797.481 s' response, and '11:27:19' last update. The fourth row is '1.4 DX100 an 188' with 'REMOTE' mode, 'OFF' servo, 'OFF' start, 'NO' alarm, '0.114 s' response, and '11:40:01' last update. Each row has a blue 'RA' button on the right. At the bottom left, it says '1 bis 4 von 4 Einträgen'. At the bottom right, there are navigation buttons: 'Zurück', '1' (highlighted), and 'Nächste'.













#	Name	Modus	Servo	Start	Alarm	Resp.	last Update
1.1	YRC an 188	TEACH	OFF	OFF	NO	0.021 s	11:40:01
1.2	NX100	REMOTE	OFF	OFF	NO	0.135 s	11:40:01
1.3	XRC an 188	OFFLINE				797.481 s	11:27:19
1.4	DX100 an 188	REMOTE	OFF	OFF	NO	0.114 s	11:40:01

YASXTOUCH - BACKUP

The automatic backup functionality enables continuous data backup especially for YASKAWA robot systems in order to quickly restore the old status in case of operating errors or data loss.

Scheduler

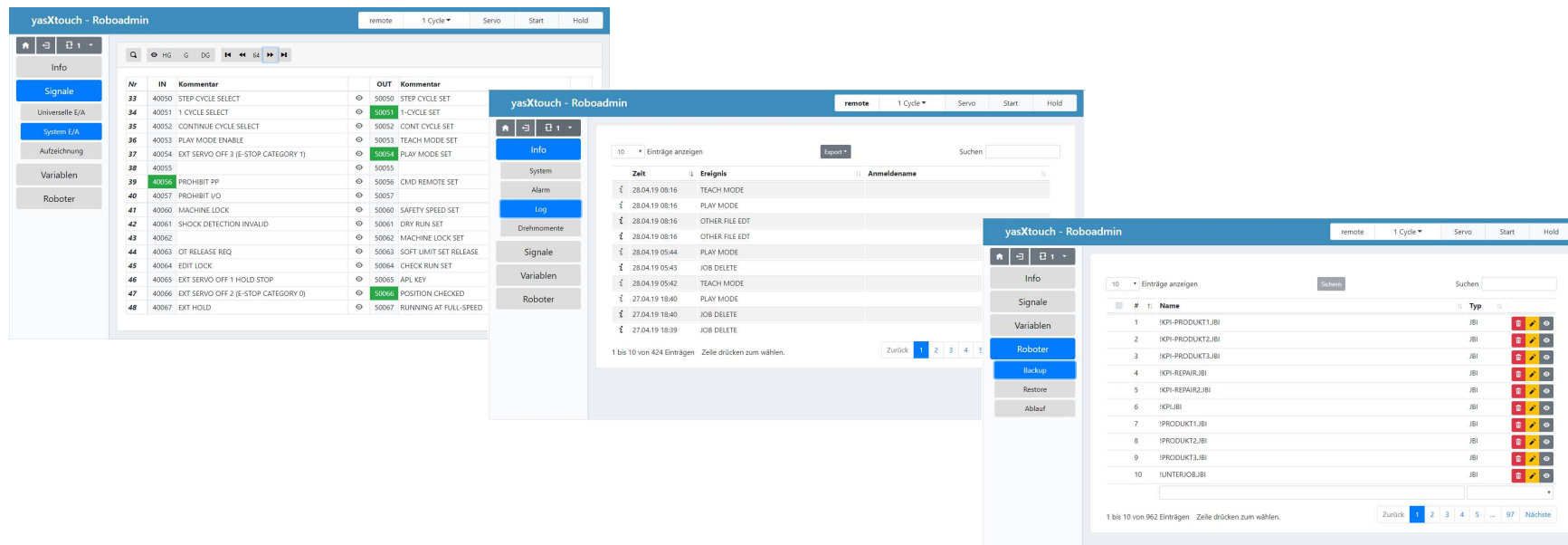
Show entries + Add Schedule Search:

#	Name	Todo	last Run	next Run	last Message	
1	YRC an 188	save JBI Data		2019-05-06 00:00	insert @ 2019-04-29 11:42	  
2	NX100	save all Data		2019-04-30 00:00	insert @ 2019-04-29 11:42	  
3	XRC an 188	save JBI Data		2019-04-30 00:00	insert @ 2019-04-29 11:43	  
4	DX100 an 188	parse Alarme		2019-04-29 14:00	insert @ 2019-04-29 11:43	  

Showing 1 to 4 of 4 entries Previous 1 Next

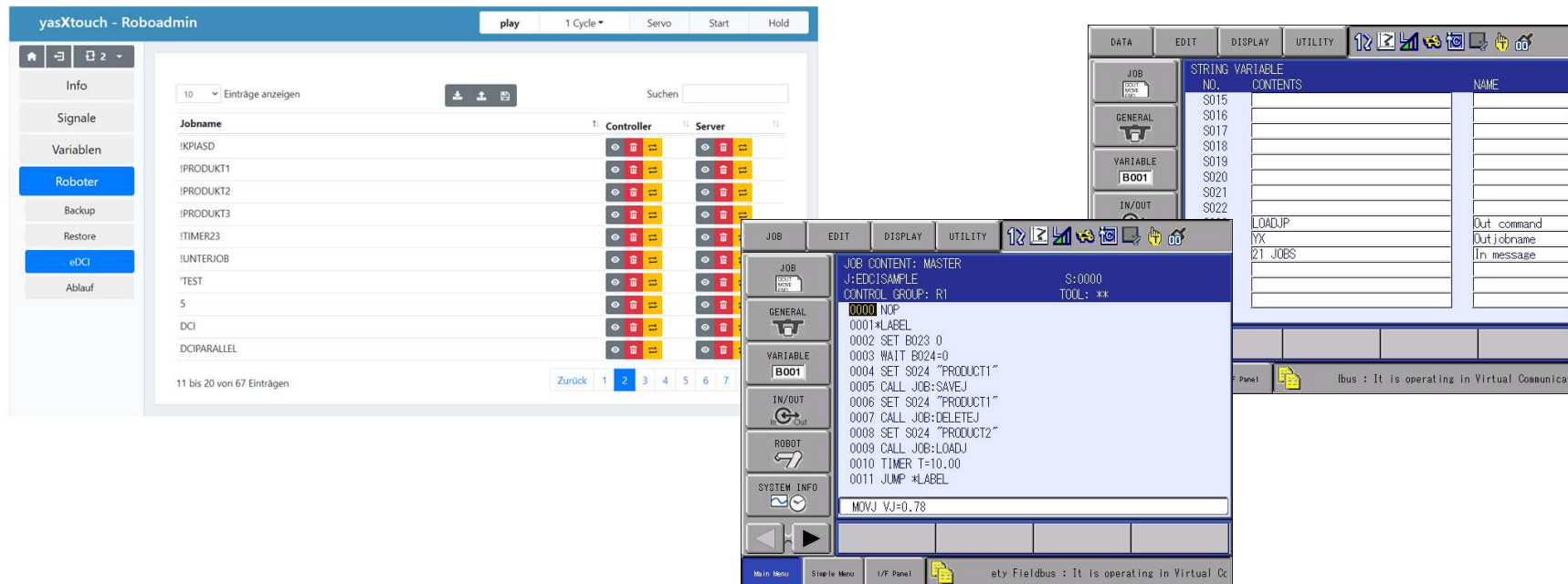
YASXTOUCH - ROBOADMIN

The specialist can quickly get an overview of the system condition, adjust and take preventive actions.



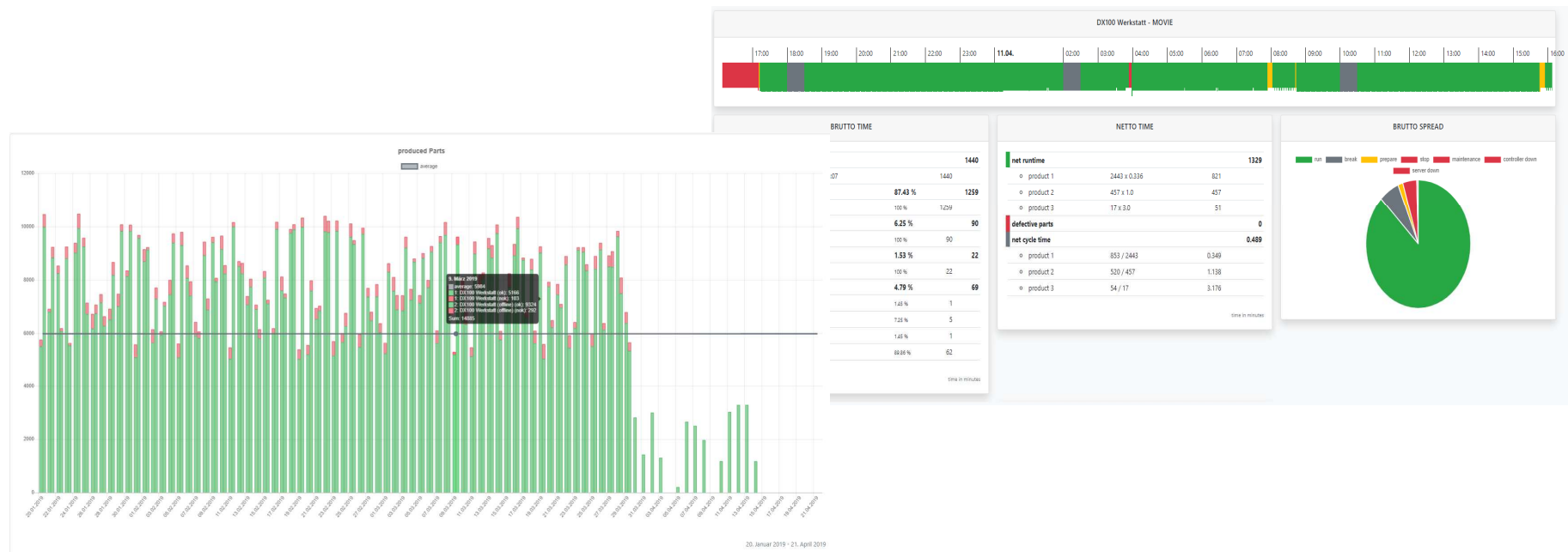
YASXTOUCH - EDCI MEMORY EXTENSION

The enhanced DCI function allows to save, delete and load programs in the program sequence. Also, with special commands as a group. This extends the memory infinitely.



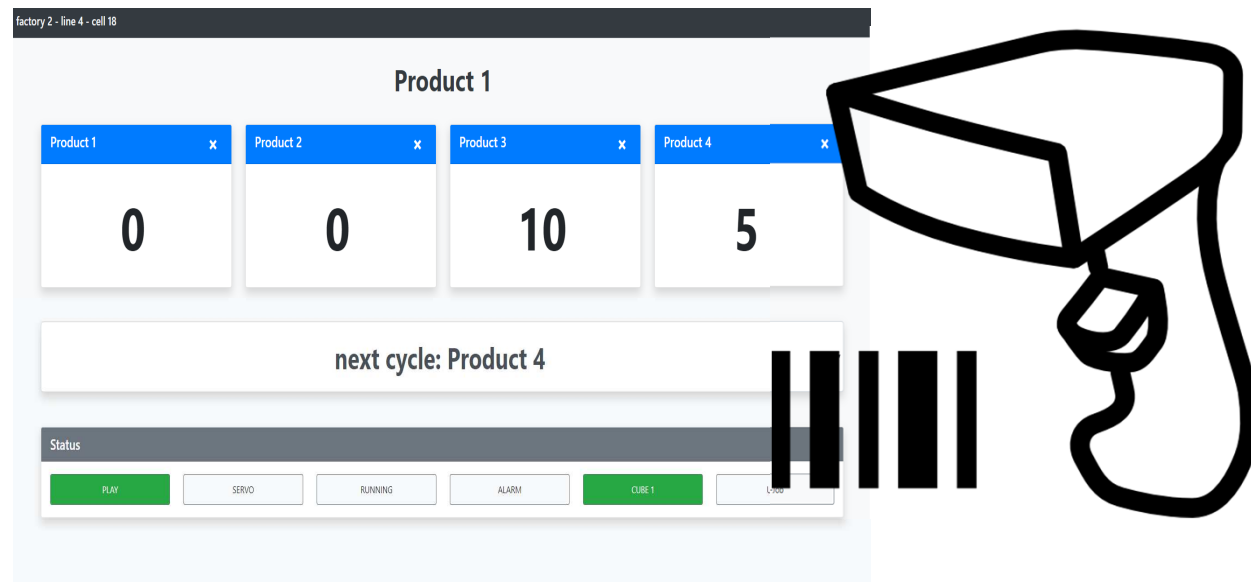
YASXTOUCH - KPI

The KPI (Key Performance Index) module records machine data. Various key figures are calculated, stored and displayed.



YASXTOUCH - HMI

The HMI module enables user-defined information exchange with the robot cell. Standard USB scanners can be integrated for product input.

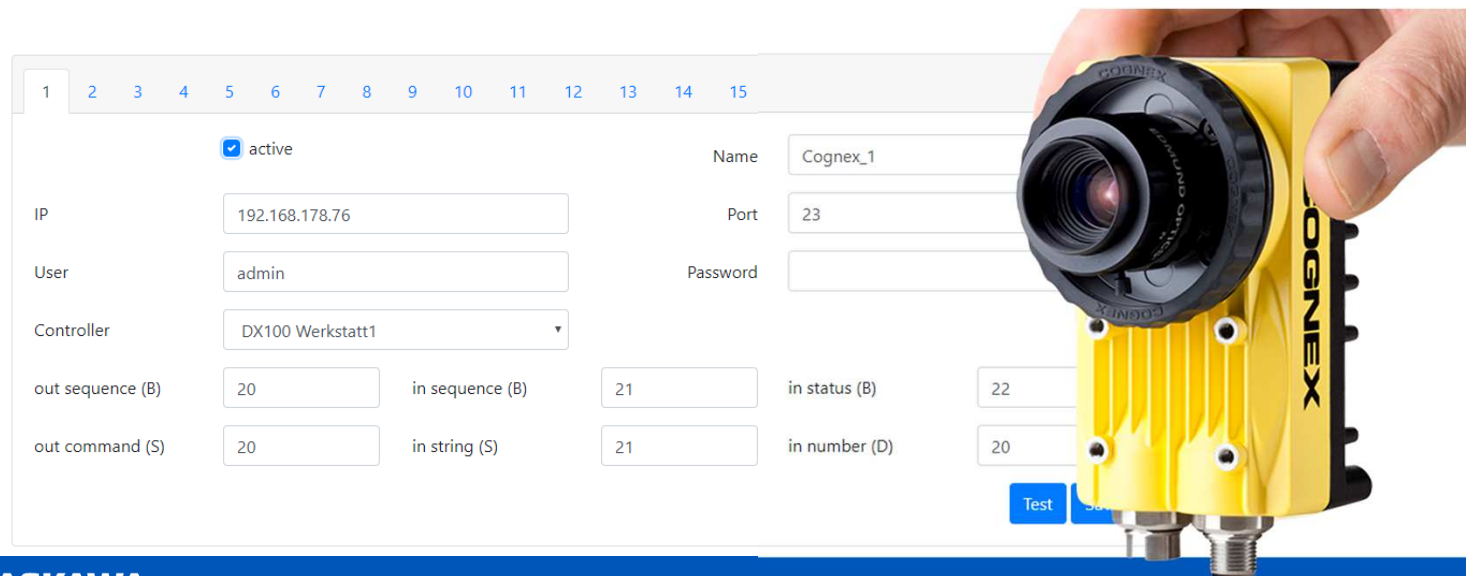


YASXTOUCH - COGNEX IN-SIGHT

The Cognex option enables communication with Cognex In-Sight cameras.

No further software or hardware adaptations to the robots are necessary.

Thus, a fast and cost-effective implementation of projects is possible when it comes to inspecting, identifying and guiding parts.



YASXTOUCH - JSON EXPORT FUNCTION

Production Plant 1

Cell 1	Cell 2	Cell 3	Cell 4
Controller Name YRC an 181	Controller Name DX100 an 181	Controller Name NX100 an 181	Controller Name NX100 Debug
Product Group TUBES	Start ●	Start ●	Start ●
Product Name BMW218D	Alarm ●	Alarm ●	Alarm ●
Total Counter 9	Servo ●	Servo ●	Servo ●
Product Counter 25	Remote ●	Remote ●	Remote ●
Start ●			
Alarm ●			
Servo ●			
Remote ●			

Data transfer to customer-side dashboard through standardized JSON data structure.

Product description

Art.-Nr.

- YasXtouch

197051

YASKAWA

© 2021 YASKAWA Europe GmbH