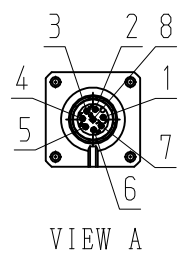


DWG. NO. 900-180-719

RoHS **CE**

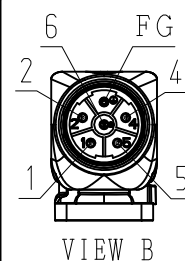
ENCODER TERMINAL CONNECTION

1	PG5V
2	PG0V
3	FRAME GROUND
4	BAT (+)
5	BAT (-)
6	DATA (+)
7	DATA (-)
8	-
CON. CASE	FRAME GROUND



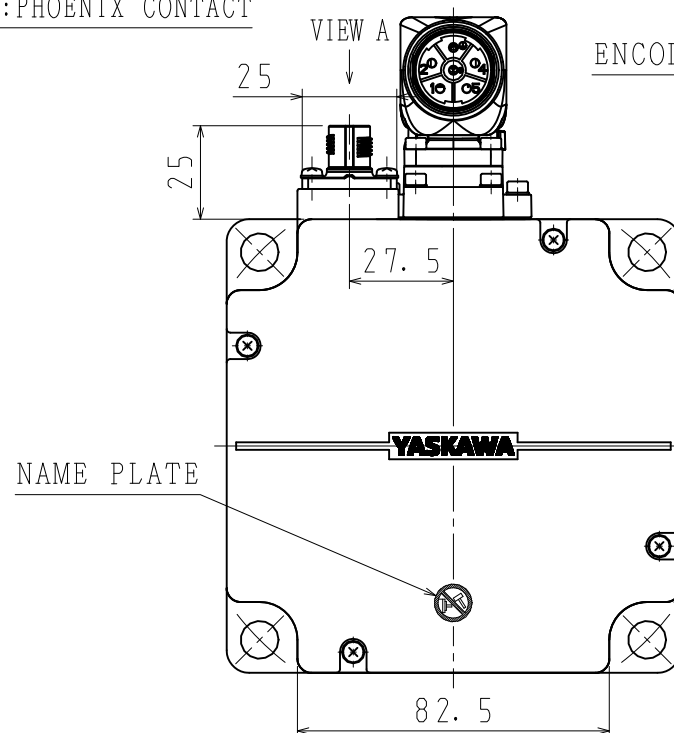
MOTOR TERMINAL CONNECTION

1	PHASE V
2	BRAKE
4	BRAKE
5	PHASE U
6	PHASE W
FG	FRAME GROUND
CON. CASE	FRAME GROUND



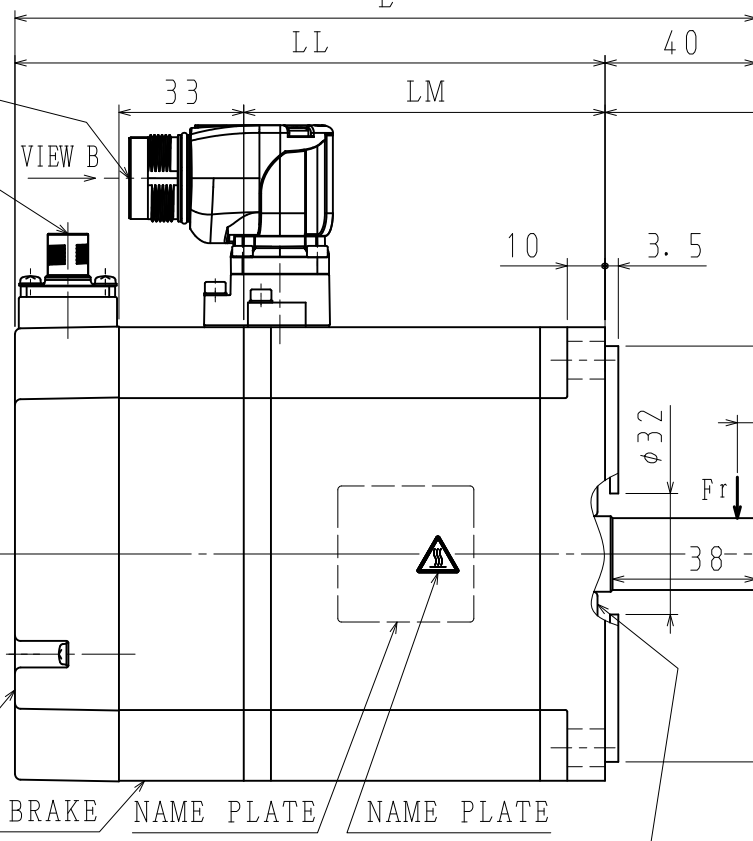
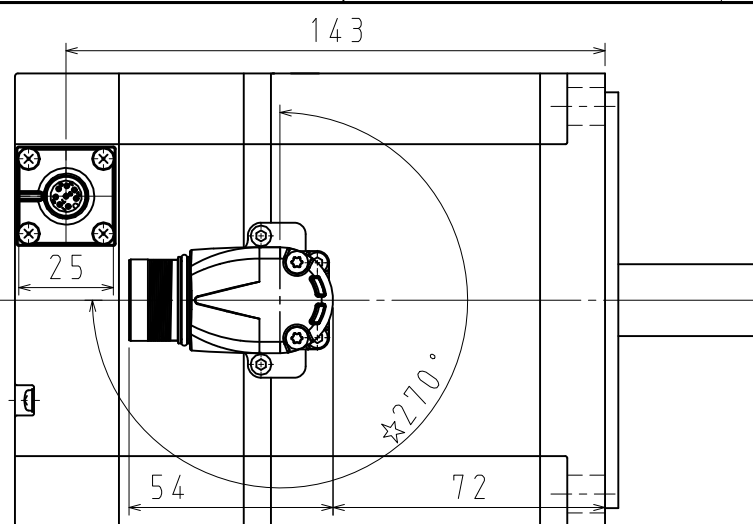
RECEPTACLE SIZE:M23
HOUSING:SF-5EP1N8AAD00S
MAKER:PHOENIX CONTACT

RECEPTACLE SIZE:M12
HOUSING:SACC-MSQ-M12MS-25-3,2 SCO
MAKER:PHOENIX CONTACT

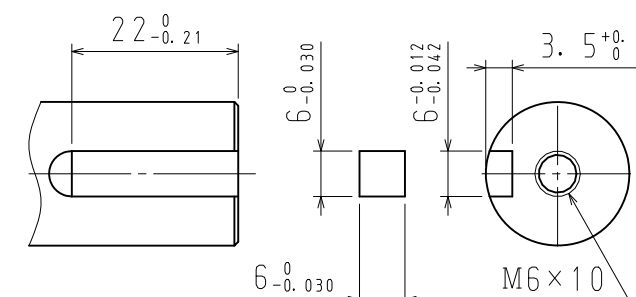


MOTOR CONNECTOR

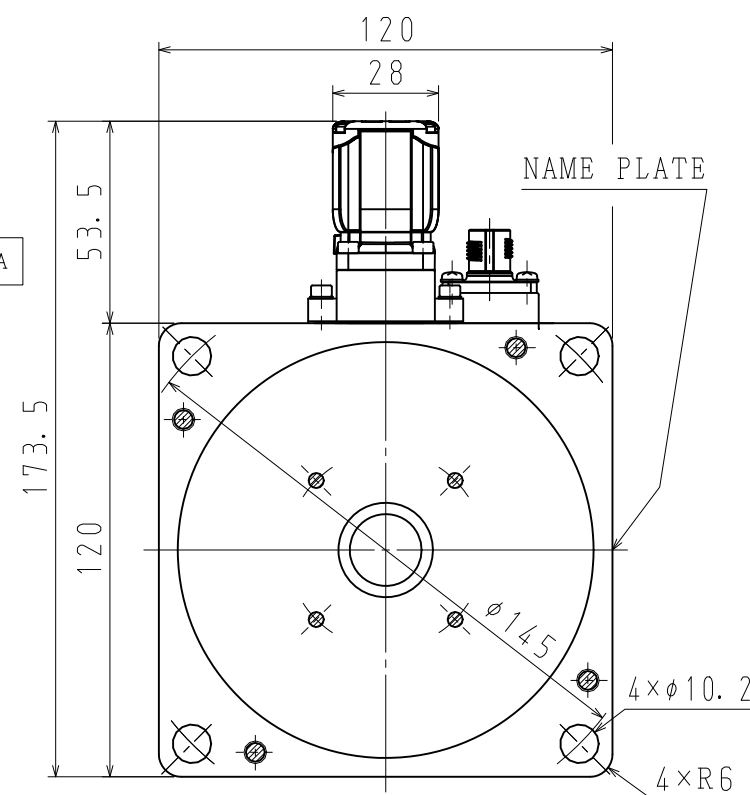
ENCODER CONNECTOR



SHAFT TYPE
(CASE OF ITEM NO. 2)



ITEM NO. 2 SUPPLIES A KEY.



NOTES

1. ALL DIMENSIONS ARE IN MILLIMETERS.
2. MOTOR SPECIFICATIONS : 900-172-603
3. ENCODER SPECIFICATIONS: 900-172-501 (24BIT ABSOLUTE)
4. HOLDING BRAKE CANNOT BE USED TO STOP MOTOR.
5. VIBRATION: 15μm OR BELOW AT RATED SPEED.
6. MOTOR CABLE AND ENCODER CABLE ARE OPTIONAL.
7. READ AND UNDERSTAND DOCUMENT PACKED WITH MOTOR (SAFETY PRECAUTIONS), AND BE CAREFUL USING MOTOR.
8. DEGREES OF PROTECTION: IP67 EXCEPT FOR SHAFT OPENING. MUST USE SPECIFIED CONNECTORS FOR MOTOR.
9. AT THE TIME OF DELIVERY OF MOTOR, EACH OF CONNECTORS ARE ATTACHED PROTECTIVE PARTS. PLEASE REMOVE THEM BEFORE ATTACHING CABLES.



BEARING

DO NOT USE AS FIXATION OF LOAD.

10. DO NOT TOUCH EACH OF CONNECTOR PINS DIRECTLY. IT CAUSES FAILURE.
11. MOTOR CONNECTOR COULD BE TURNED IN THE RANGE OF ☆ WITHIN 10 TIMES.

RATED OUTPUT (W)	HOLDING BRAKE SPECIFICATIONS			
	MOMENT OF INERTIA GD ² /4 (kg·m ²)	HOLDING TORQUE (N·m)	RATED VOLTAGE	CAPACITY (W)
1500	1.2×10 ⁻⁴	4.77	DC24V ±10%	7.5

ITEM NO.	TYPE	SHAFT TYPE	L (mm)	LL (mm)	LM (mm)	RATED OUTPUT (W)	RATED TORQUE (N·m)	TIME RATING	RATED SPEED (min ⁻¹)	VOLTAGE (Vrms)	RATED CURRENT (Arms)	THERMAL CLASS	WEIGHT (kg)	ALLWABLE RADIAL LOAD Fr (N)	ALLWABLE THRUST LOAD Fs (N)
1	SGM7J-15D7F2C	STRAIGHT	196.5	156.5	95.6	1500	4.77	CONT.	3000	400 (3PHASE)	4.5	B	8.1	490	147
2	SGM7J-15D7F6C	KEY+TAP													

F				DRWN.	S. KAMIJO	TITLE	AC SERVOMOTOR Σ-7 SERIES	DRWN. DATE	MAY. 24, '15	REV.	
				CHKD.	T. HIROSE		SGM7J MODEL 1500W	DWG. NO.	900-180-719		
				APRV.	K. AOKI						
		SCALE 1 : 2									