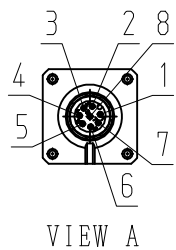


DWG. NO. 900-180-716

**RoHS** **CE**

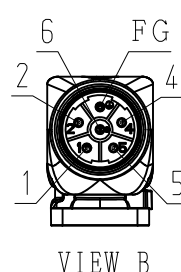
ENCODER TERMINAL CONNECTION

1	PG5V
2	PG0V
3	FRAME GROUND
4	BAT (+)
5	BAT (-)
6	DATA (+)
7	DATA (-)
8	-
CON. CASE	FRAME GROUND



MOTOR TERMINAL CONNECTION

1	PHASE V
2	-
4	-
5	PHASE U
6	PHASE W
FG	FRAME GROUND
CON. CASE	FRAME GROUND

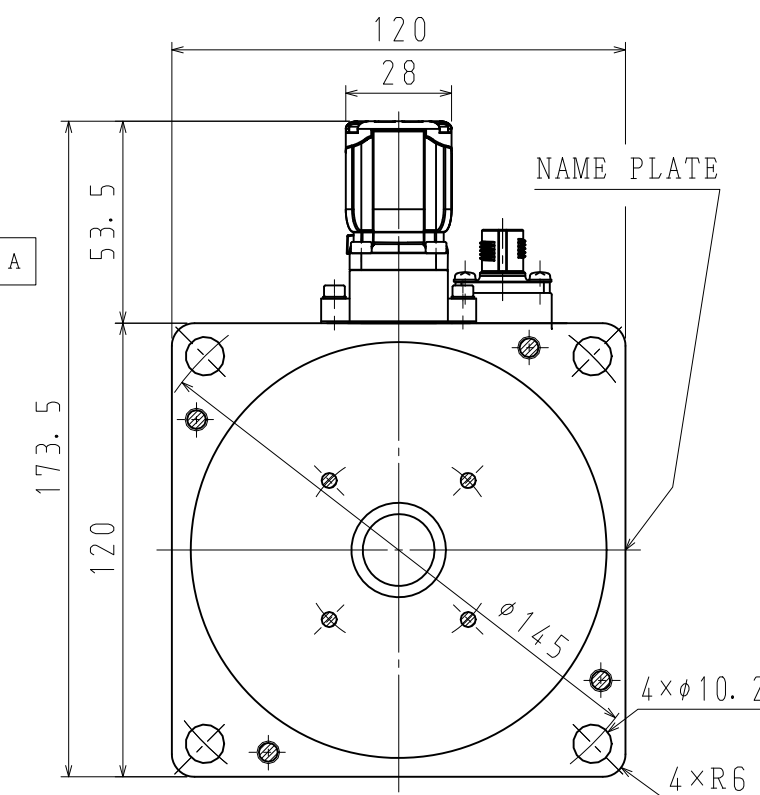
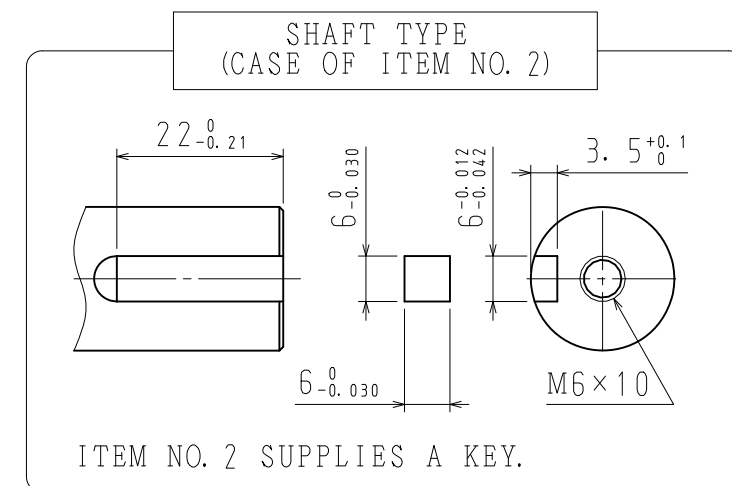
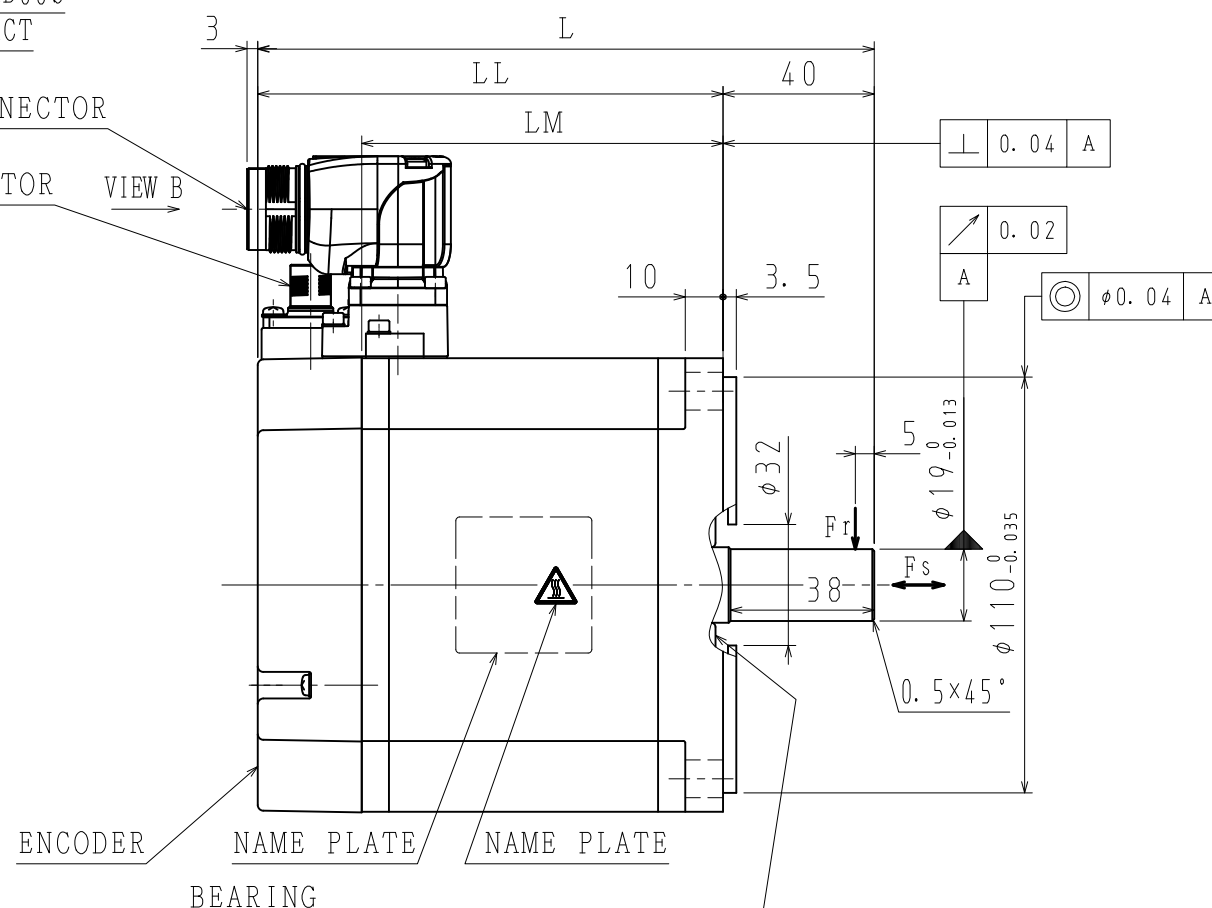
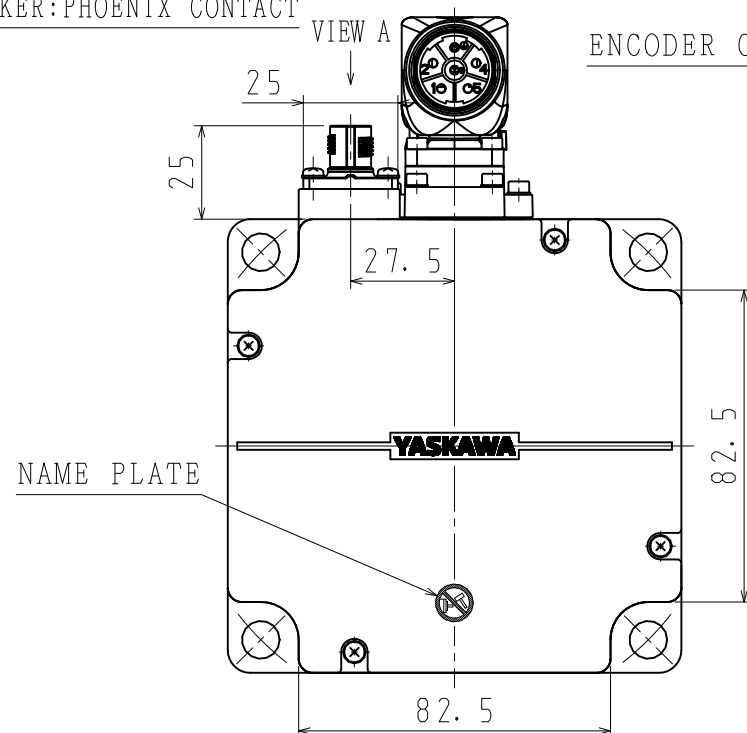


RECEPTACLE SIZE:M23  
HOUSING:SF-5EP1N8AAD00S  
MAKER:PHOENIX CONTACT

RECEPTACLE SIZE:M12  
HOUSING:SACC-MSQ-M12MS-25-3,2 SCO  
MAKER:PHOENIX CONTACT

MOTOR CONNECTOR

ENCODER CONNECTOR




NOTES

1. ALL DIMENSIONS ARE IN MILLIMETERS.
2. MOTOR SPECIFICATIONS :900-172-603
3. ENCODER SPECIFICATIONS:900-172-501 (24BIT ABSOLUTE)
4. VIBRATION:15 $\mu$ m OR BELOW AT RATED SPEED.
5. MOTOR CABLE AND ENCODER CABLE ARE OPTIONAL.
6. READ AND UNDERSTAND DOCUMENT PACKED WITH MOTOR (SAFETY PRECAUTIONS), AND BE CAREFUL USING MOTOR.
7. DEGREES OF PROTECTION:IP67 EXCEPT FOR SHAFT OPENING. MUST USE SPECIFIED CONNECTORS FOR MOTOR.
8. AT THE TIME OF DELIVERY OF MOTOR, EACH OF CONNECTORS ARE ATTACHED PROTECTIVE PARTS. PLEASE REMOVE THEM BEFORE ATTACHING CABLES.

ENCODER  
NAME PLATE  
NAME PLATE  
BEARING  
DO NOT USE AS FIXATION OF LOAD.

9. DO NOT TOUCH EACH OF CONNECTOR PINS DIRECTLY. IT CAUSES FAILURE.
10. MOTOR CONNECTOR COULD BE TURNED IN THE RANGE OF  $\star$  WITHIN 10 TIMES.

ITEM NO.	TYPE	SHAFT TYPE	L (mm)	LL (mm)	LM (mm)	RATED OUTPUT (W)	RATED TORQUE (N·m)	TIME RATING	RATED SPEED (min <sup>-1</sup> )	VOLTAGE (V <sub>rms</sub> )	RATED CURRENT (A <sub>rms</sub> )	THERMAL CLASS	WEIGHT (kg)	ALLWABLE RADIAL LOAD F <sub>r</sub> (N)	ALLWABLE THRUST LOAD F <sub>s</sub> (N)
1	SGM7J-15D7F21	STRAIGHT	163.5	123.5	95.6	1500	4.77	CONT.	3000	400 (3PHASE)	4.5	B	6.4	490	147
2	SGM7J-15D7F61	KEY+TAP													

F					DRWN.	S. KAMIJO	TITLE AC SERVOMOTOR Σ-7 SERIES  SGM7J MODEL 1500W	DRWN. DATE	MAY. 30, '15		REV.
					CHKD.	T. HIROSE		DWG. NO.	900-180-716		
				SCALE 1 : 2	APRV.	K. AOKI					

SIZE A3