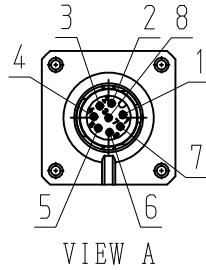


DWG. NO. 900-180-715

**RoHS** **CE**

ENCODER TERMINAL CONNECTION

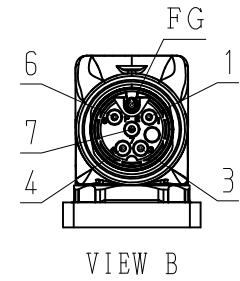
|           |              |
|-----------|--------------|
| 1         | PG5V         |
| 2         | PG0V         |
| 3         | FRAME GROUND |
| 4         | BAT (+)      |
| 5         | BAT (-)      |
| 6         | DATA (+)     |
| 7         | DATA (-)     |
| 8         | -            |
| CON. CASE | FRAME GROUND |



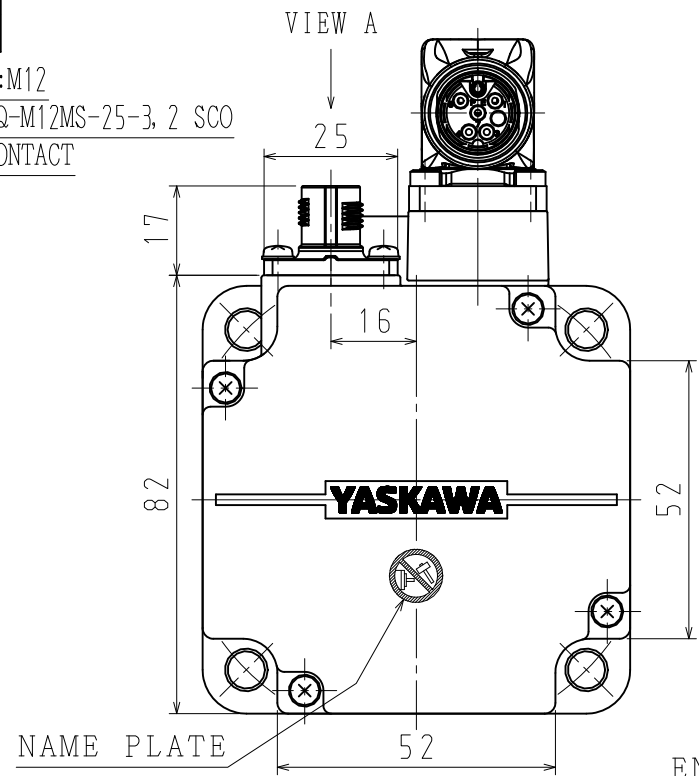
RECEPTACLE SIZE:M12  
HOUSING:SACC-MSQ-M12MS-25-3.2 SCO  
MAKER:PHOENIX CONTACT

MOTOR TERMINAL CONNECTION

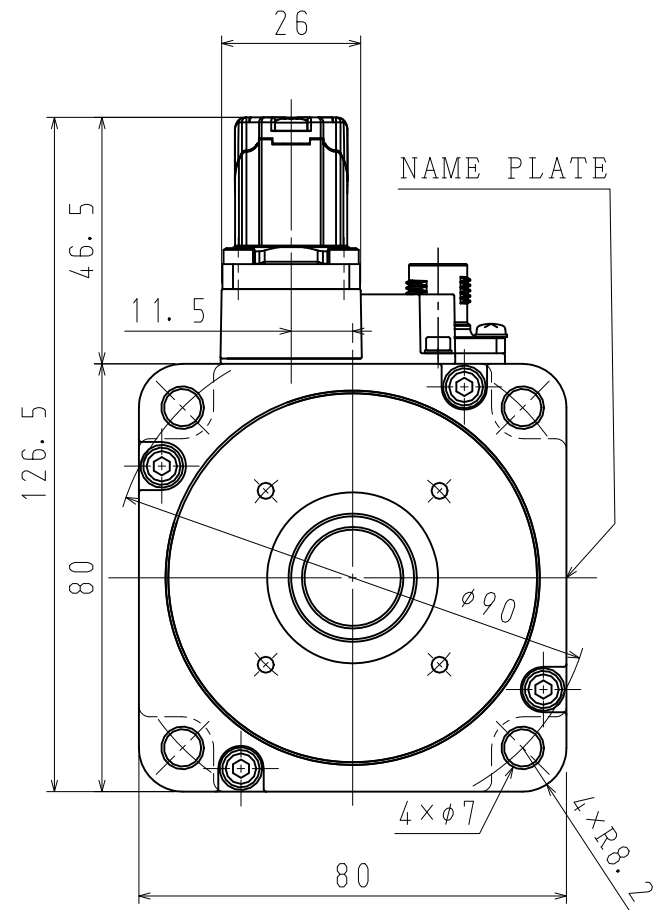
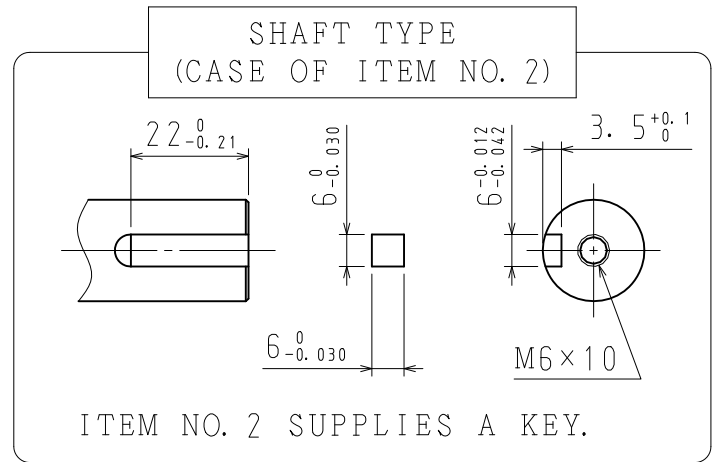
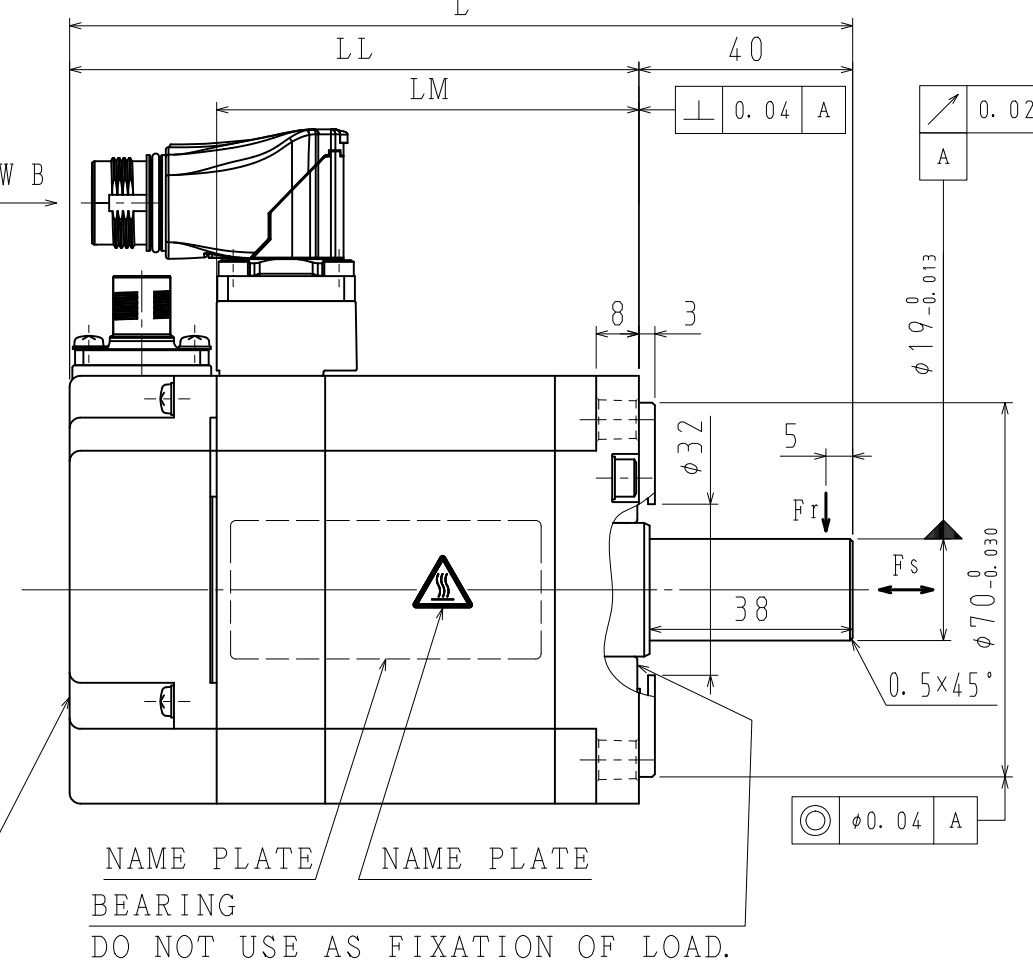
|           |              |
|-----------|--------------|
| 1         | -            |
| 3         | PHASE U      |
| 4         | PHASE V      |
| 6         | -            |
| 7         | PHASE W      |
| FG        | FRAME GROUND |
| CON. CASE | FRAME GROUND |



RECEPTACLE SIZE:M17  
HOUSING:ST-5EP1N8AA500S  
MAKER:PHOENIX CONTACT



VIEW B



NOTES

1. ALL DIMENSIONS ARE IN MILLIMETERS.
2. MOTOR SPECIFICATIONS :900-172-603
3. ENCODER SPECIFICATIONS:900-172-501 (24BIT ABSOLUTE)
4. VIBRATION:15μm OR BELOW AT RATED SPEED.
5. MOTOR CABLE AND ENCODER CABLE ARE OPTIONAL.
6. READ AND UNDERSTAND DOCUMENT PACKED WITH MOTOR (SAFETY PRECAUTIONS), AND BE CAREFUL USING MOTOR.
7. DEGREES OF PROTECTION:IP67 EXCEPT FOR SHAFT OPENING. MUST USE SPECIFIED CONNECTORS FOR MOTOR.
8. AT THE TIME OF DELIVERY OF MOTOR, EACH OF CONNECTORS ARE ATTACHED PROTECTIVE PARTS. PLEASE REMOVE THEM BEFORE ATTACHING CABLES.

9. DO NOT TOUCH EACH OF CONNECTOR PINS DIRECTLY. IT CAUSES FAILURE.
10. MOTOR CONNECTOR COULD BE TURNED IN THE RANGE OF ☆ WITHIN 10 TIMES.

| ITEM NO | TYPE          | SHAFT TYPE | L (mm) | LL (mm) | LM (mm) | RATED OUTPUT (W) | RATED TORQUE (N·m) | TIME RATING | RATED SPEED (min <sup>-1</sup> ) | VOLTAGE (Vrms) | RATED CURRENT (Arms) | THERMAL CLASS | WEIGHT (kg) | ALLWABLE RADIAL LOAD Fr (N) | ALLWABLE THRUST LOAD Fs (N) |
|---------|---------------|------------|--------|---------|---------|------------------|--------------------|-------------|----------------------------------|----------------|----------------------|---------------|-------------|-----------------------------|-----------------------------|
| 1       | SGM7J-08D7F21 | STRAIGHT   | 146.5  | 106.5   | 79      | 750              | 2.39               | CONT.       | 3000                             | 400 (3PHASE)   | 2.2                  | B             | 2.3         | 392                         | 147                         |
| 2       | SGM7J-08D7F61 | KEY+TAP    |        |         |         |                  |                    |             |                                  |                |                      |               |             |                             |                             |

|   |  |       |           |       |                          |                  |              |  |      |   |
|---|--|-------|-----------|-------|--------------------------|------------------|--------------|--|------|---|
| F |  | DRWN. | K. ARAI   | TITLE | AC SERVOMOTOR Σ-7 SERIES | DRWN. DATE       | JUN. 09, '15 |  | REV. | ◇ |
|   |  | CHKD. | T. HIROSE |       |                          | DWG. NO.         | 900-180-715  |  |      |   |
|   |  | APRV. | K. AOKI   |       |                          | SGM7J MODEL 750W |              |  |      |   |

