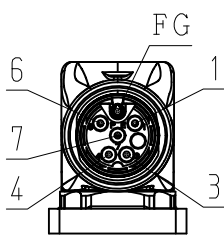


DWG. NO. 900-180-711

RoHS **CE**

MOTOR TERMINAL CONNECTION

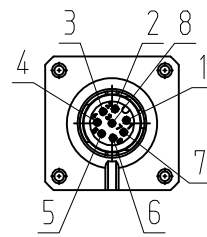
1	BRAKE
3	PHASE U
4	PHASE V
6	BRAKE
7	PHASE W
FG	FRAME GROUND
CON. CASE	FRAME GROUND



VIEW B

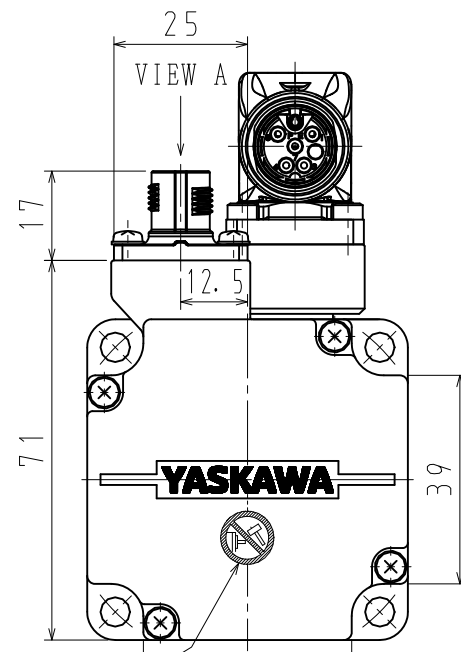
ENCODER TERMINAL CONNECTION

1	PG5V
2	PG0V
3	FRAME GROUND
4	-
5	-
6	DATA (+)
7	DATA (-)
8	-
CON. CASE	FRAME GROUND



VIEW A

RECEPTACLE SIZE:M17
HOUSING:ST-5EP1N8AA500S
MAKER:PHOENIX CONTACT



NAME PLATE

ENCODER

VIEW A

71

12.5

YASKAWA

39

39

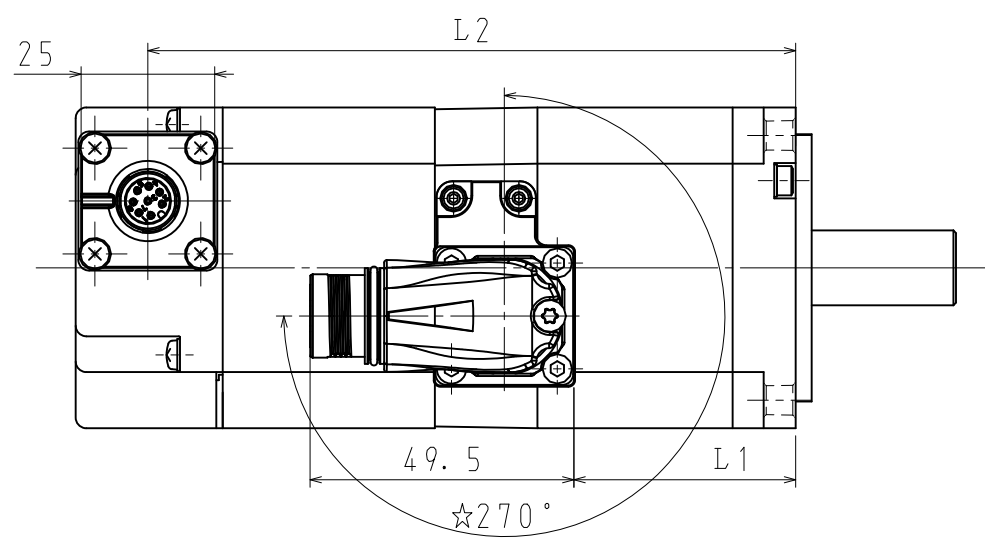
HOLDING BRAKE

NAME PLATE

NAME PLATE

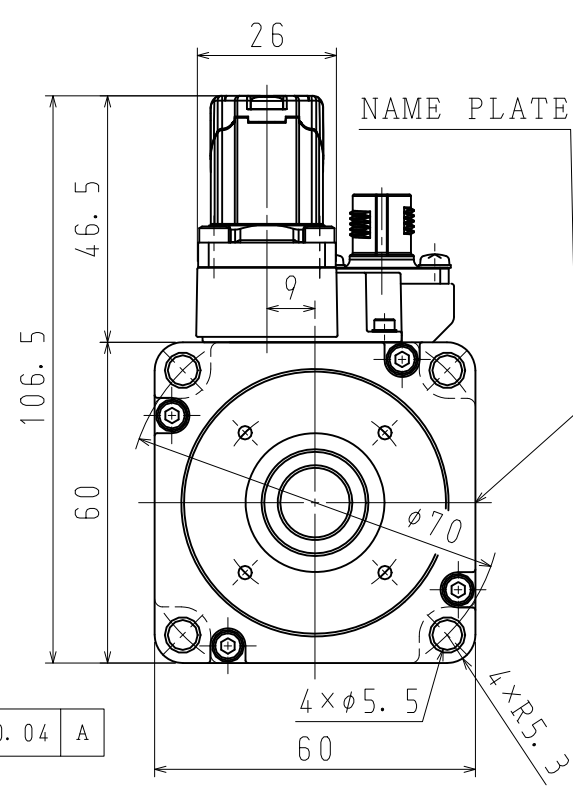
BEARING

DO NOT USE AS FIXATION OF LOAD.



SHAFT TYPE
(CASE OF ITEM NO. 2, 4)

ITEM NO. 2 AND 4 SUPPLIES A KEY.



NAME PLATE

NOTES

1. ALL DIMENSIONS ARE IN MILLIMETERS.
2. MOTOR SPECIFICATIONS :900-172-603
3. ENCODER SPECIFICATIONS:900-172-502 (24BIT INCREMENTAL)
4. HOLDING BRAKE CANNOT BE USED TO STOP MOTOR.
5. VIBRATION:15μm OR BELOW AT RATED SPEED.
6. MOTOR CABLE AND ENCODER CABLE ARE OPTIONAL.
7. READ AND UNDERSTAND DOCUMENT PACKED WITH MOTOR (SAFETY PRECAUTIONS), AND BE CAREFUL USING MOTOR.
8. DEGREES OF PROTECTION:IP67 EXCEPT FOR SHAFT OPENING. MUST USE SPECIFIED CONNECTORS FOR MOTOR.
9. AT THE TIME OF DELIVERY OF MOTOR, EACH OF CONNECTORS ARE ATTACHED PROTECTIVE PARTS. PLEASE REMOVE THEM BEFORE ATTACHING CABLES.

10. DO NOT TOUCH EACH OF CONNECTOR PINS DIRECTLY. IT CAUSES FAILURE.
11. MOTOR CONNECTOR COULD BE TURNED IN THE RANGE OF ☆ WITHIN 10 TIMES.

RATED OUTPUT (W)	HOLDING BRAKE SPECIFICATIONS			
	MOMENT OF INERTIA GD ² /4 (kg·m ²)	HOLDING TORQUE (N·m)	RATED VOLTAGE	CAPACITY (W)
200	7×10 ⁻⁶	0.637	DC24V ±10%	6
400		1.27		

ITEM NQ	TYPE	SHAFT TYPE	L (mm)	LL (mm)	LM (mm)	L 1 (mm)	L 2 (mm)	RATED OUTPUT (W)	RATED TORQUE (N・m)	TIME RATING	RATED SPEED (min ⁻¹)	VOLTAGE (V rms)	RATED CURRENT (A rms)	THERMAL CLASS	WEIGHT (k g)	ALLOWABLE RADIAL LOAD F _r (N)	ALLOWABLE THRUST LOAD F _s (N)
1	SGM7J-02DFF2C	STRAIGHT	148.5	118.5	51.2	25	105	200	0.637	CONT.	3000	400 (3PHASE)	1.5	B	1.5	245	74
2	SGM7J-02DFF6C	KEY+TAP						400	1.27								
3	SGM7J-04DFF2C	STRAIGHT	165	135	67.2	41.5	121.5	400	1.27				1.4				
4	SGM7J-04DFF6C	KEY+TAP															

DRWN. K. ARAI

CHKD. T. HIROSE

APRV. K. AOKI

YASKAWA

AC SERVOMOTOR Σ-7 SERIES

SGM7J MODEL 200, 400W

DRWN. DATE JUN. 09, '15

DWG. NO. 900-180-711

REV.

SCALE 1:√2