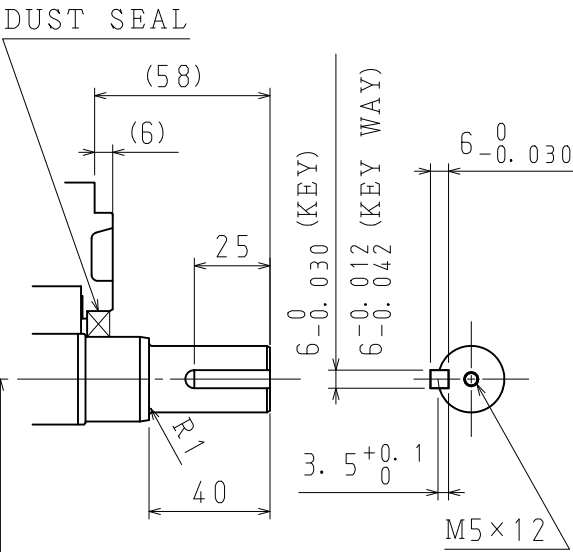
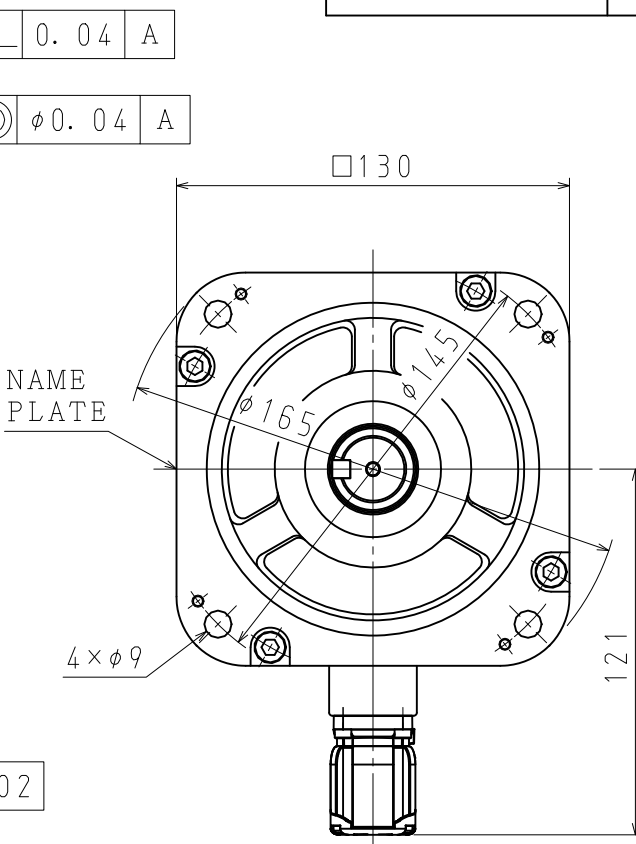
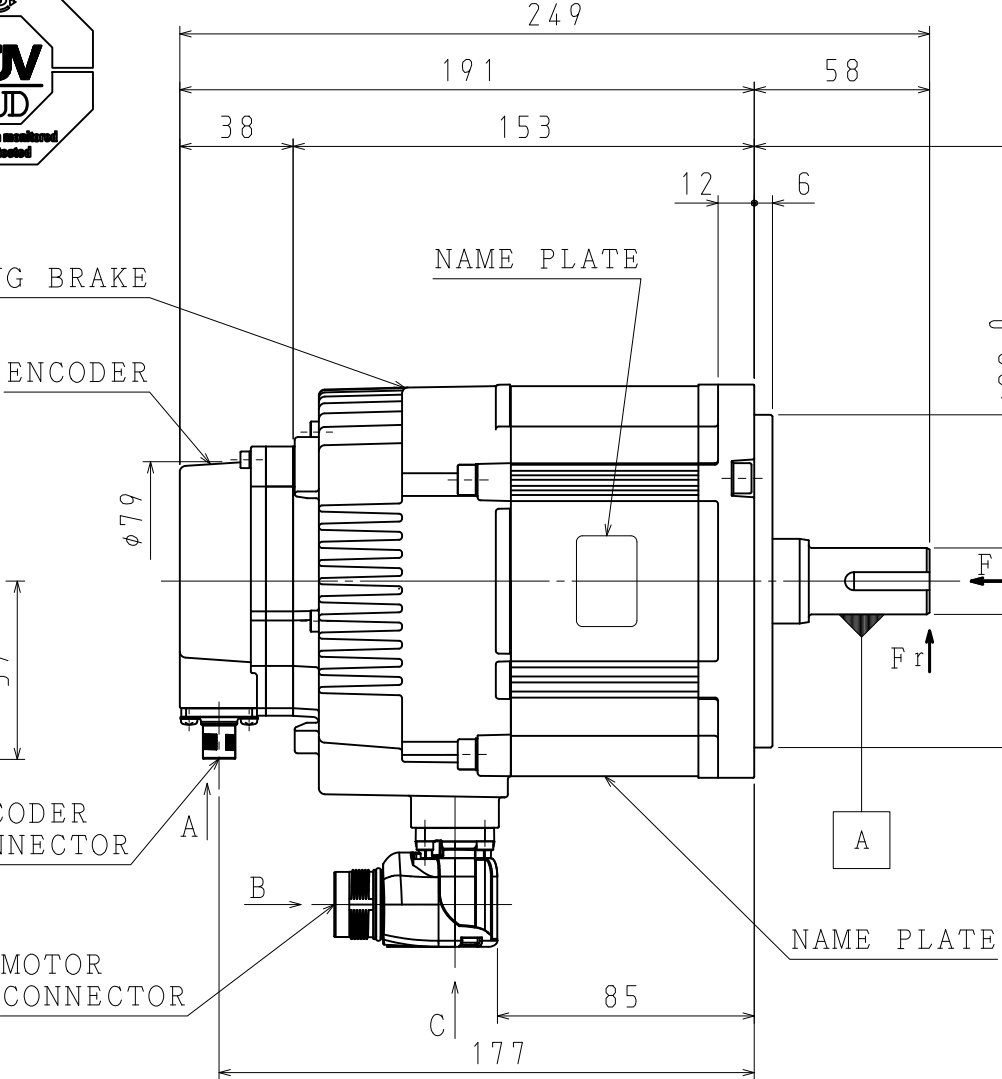
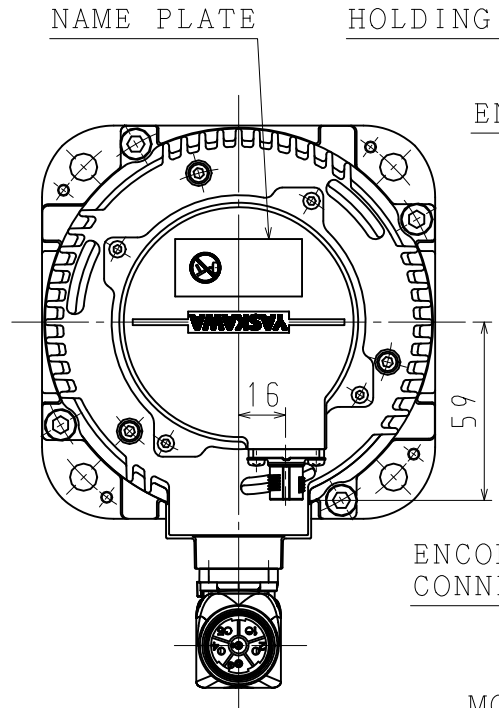


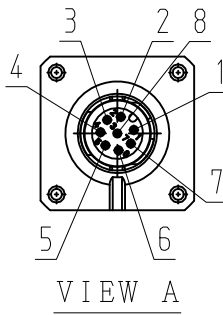
HOLDING BRAKE SPECIFICATIONS			
MOMENT OF INERTIA GD <sup>2</sup> /4 (kg·m <sup>2</sup> )	HOLDING TORQUE (N·m)	RATED VOLTAGE	CAPACITY (W)
2.1×10 <sup>-4</sup>	19.6	DC24V (0~+10%)	10



DETAIL OF SHAFT EXTENSION

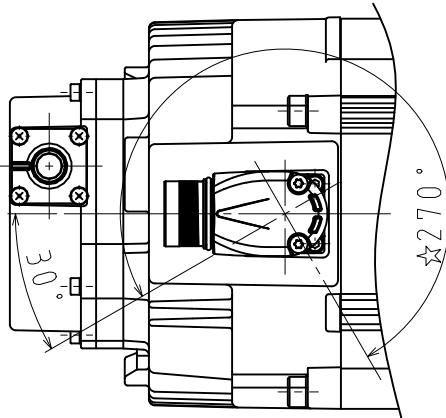
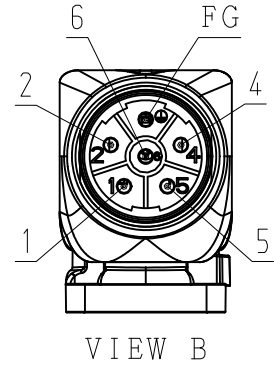
ENCODER TERMINAL CONNECTION

1	PG5V
2	PG0V
3	FRAME GROUND
4	-
5	-
6	DATA (+)
7	DATA (-)
8	-
CON. CASE	FRAME GROUND



MOTOR TERMINAL CONNECTION

1	PHASE V
2	BRAKE
4	BRAKE
5	PHASE U
6	PHASE W
FG	FRAME GROUND
CON. CASE	FRAME GROUND



RECEPTACLE SIZE:M23

HOUSING:SF-5EP1N8AAD00S

MAKER:PHOENIX CONTACT

RECEPTACLE SIZE:M12

HOUSING:SACC-MSQ-M12MS-25-3, 2 SCO

MAKER:PHOENIX CONTACT

NOTES.

1. ALL DIMENSIONS ARE IN MILLIMETERS.
2. MOTOR SPECIFICATIONS :900-177-305
3. ENCODER SPECIFICATIONS:900-193-533 (24BIT INCREMENTAL)
4. HOLDING BRAKE CANNOT BE USED TO STOP MOTOR.
5. VIBRATION : 15μm OR BELOW AT RATED SPEED.
6. PLUGS AND CABLE CLAMPS ARE OPTIONAL.
7. READ AND UNDERSTAND DOCUMENT PACKED WITH MOTOR (SAFETY PRECAUTIONS), AND BE CAREFUL USING MOTOR.
8. DEGREES OF PROTECTION:IP67 EXCEPT FOR SHAFT OPENING.
9. DO NOT TOUCH EACH OF CONNECTOR PINS DIRECTLY. IT CAUSE FAILURE.
10. IN CASE OF MOUNTING THIS MOTOR HORIZONTAL, TO PLACE THE CONNECTOR DOWN IS RECOMMENDABLE.
11. USE HEXAGON SOCKET HEAD CAP SCREWS FOR MOUNTING MOTOR.
12. MOTOR CONNECTOR COULD BE TURNED IN THE RANGE OF ☆ WITHIN 10 TIMES.

TYPE	RATED OUTPUT kW	RATED TORQUE N·m	TIME RATING	RATED SPEED min <sup>-1</sup>	VOLTAGE V <sub>rms</sub>	RATED CURRENT A <sub>rms</sub>	THERMAL CLASS	WEIGHT kg	ALLOWABLE RADIAL LOAD F <sub>r</sub> N	ALLOWABLE THRUST LOAD F <sub>s</sub> N
SGM7G-13DFRKH	1.3	8.34	CONT.	1500	400 (3PHASE)	8.3	F	9.1	686 (AT SHAFT END)	343

DRWN  
CHKD  
APRV

M. MURAKI  
T. HIROSE  
K. AOKI

YASKAWA

SCALE 1 : 2.5

TITLE

AC SERVOMOTOR Σ-7 SERIES

SGM7G MODEL 1.3kW

DRWN. DATE

Oct. 26 ' 16

DWG. NO.

900-191-780

REV.