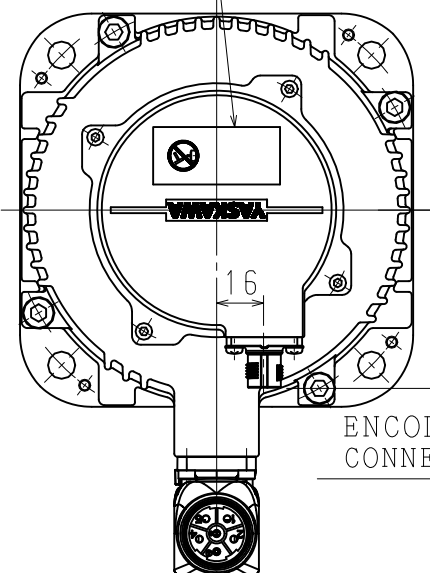


DWG. NO. 900-181-034



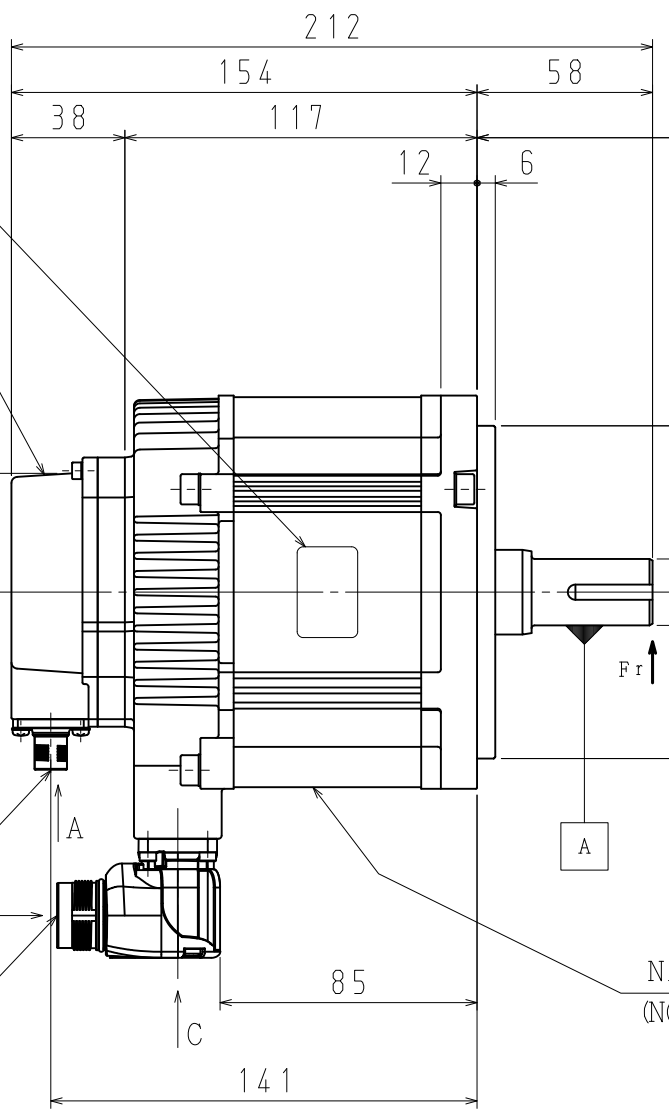
NAME PLATE (ENCODER TYPE) NAME PLATE (RATING INDICATION)

ENCODER



ENCODER CONNECTOR

MOTOR CONNECTOR

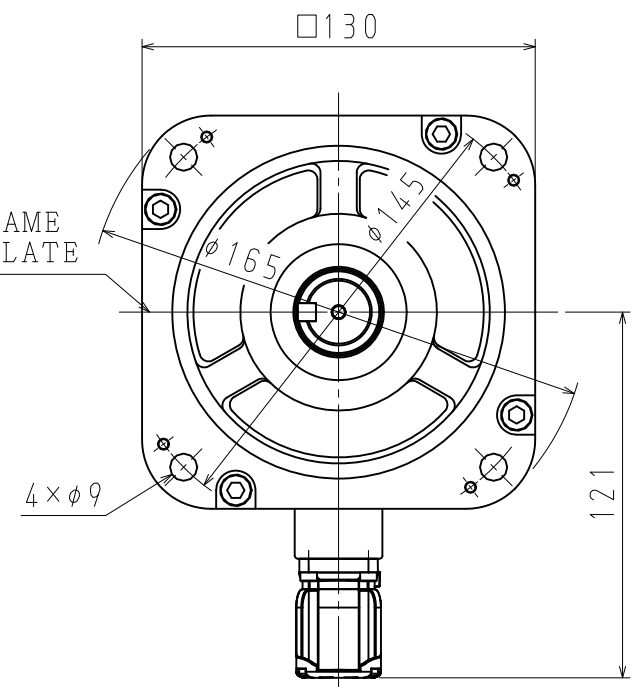


NAME PLATE (NOTICE MARK)

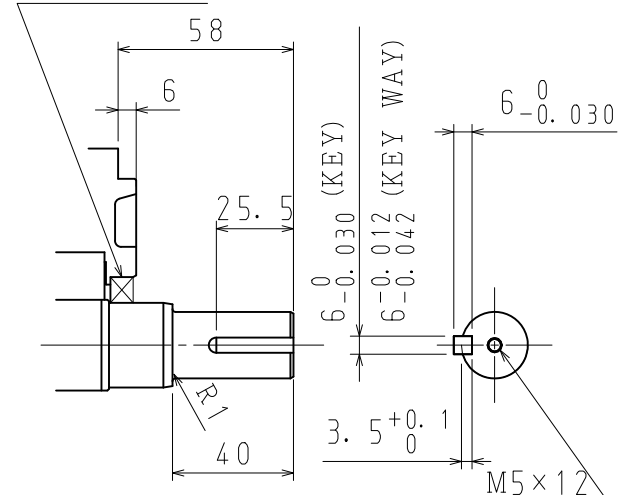
0.04 A

0.04 A

0.02



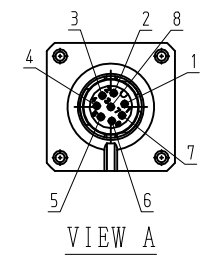
DUST SEAL



DETAIL OF SHAFT EXTENSION

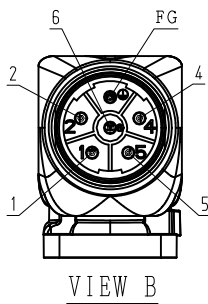
ENCODER TERMINAL CONNECTION

1	PG5V
2	PG0V
3	FRAME GROUND
4	BAT (+)
5	BAT (-)
6	DATA (+)
7	DATA (-)
8	-
CON. CASE	FRAME GROUND

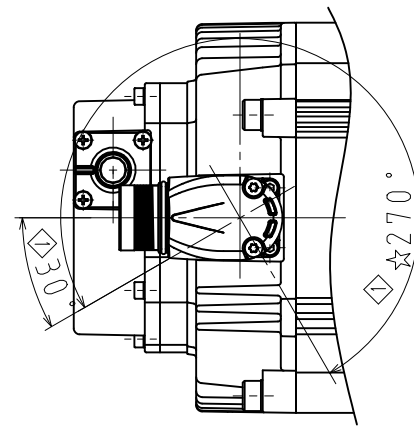


MOTOR TERMINAL CONNECTION

1	PHASE V
2	-
4	-
5	PHASE U
6	PHASE W
FG	FRAME GROUND
CON. CASE	FRAME GROUND



RECEPTACLE SIZE:M23
HOUSING:SF-5EP1N8AAD00S
MAKER:PHOENIX CONTACT



NOTES.

1. ALL DIMENSIONS ARE IN MILLIMETERS.
2. MOTOR SPECIFICATIONS :900-172-590
3. ENCODER SPECIFICATIONS:900-172-503 (24BIT INCREMENTAL)
4. VIBRATION : 15μm OR BELOW AT RATED SPEED.
5. PLUGS AND CABLE CLAMPS ARE OPTIONAL.
6. READ AND UNDERSTAND DOCUMENT PACKED WITH MOTOR (SAFETY PRECAUTIONS), AND BE CAREFUL USING MOTOR.
7. DEGREES OF PROTECTION:IP67 EXCEPT FOR SHAFT OPENING.
8. DO NOT TOUCH EACH OF CONNECTOR PINS DIRECTLY. IT CAUSE FAILURE.
9. IN CASE OF MOUNTING THIS MOTOR HORIZONTAL, TO PLACE THE CONNECTOR DOWN IS RECOMMENDABLE.
10. USE HEXAGON SOCKET HEAD CAP SCREWS FOR MOUNTING MOTOR.
11. MOTOR CONNECTOR COULD BE TURNED IN THE RANGE OF ☆ WITHIN 10 TIMES.

RECEPTACLE SIZE:M12
HOUSING:SACC-MSQ-M12MS
-25-3, 2 SCO
MAKER:PHOENIX CONTACT

TYPE	RATED OUTPUT kW	RATED TORQUE N·m	TIME RATING	RATED SPEED min ⁻¹	VOLTAGE V _{rms}	RATED CURRENT A _{rms}	THERMAL CLASS	WEIGHT kg	ALLOWABLE RADIAL LOAD F _r N	ALLOWABLE THRUST LOAD F _s N
SGM7G-13D7FKF	0.85	5.39	CONT.	1500	400 (3PHASE)	5.4	F	5.6	490 (AT SHAFT END)	98

3

Revised

15-07-07

H. KATO/T. HIROSE

DRWN. H. KATO

CHKD. T. HIROSE

APRV. K. AOKI

TITLE

AC SERVOMOTOR Σ-7 SERIES

SGM7G MODEL 1.3kW

DRWN. DATE

Jun. 06' 15

DWG. NO.

900-181-034

REV.

1

SCALE

1 : 2.5

SIZE

A3