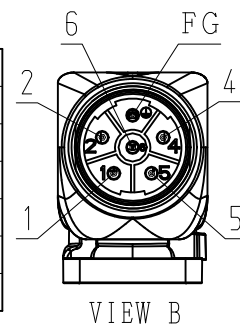


DWG. NO. 900-180-731

RoHS **CE**

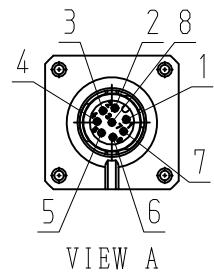
MOTOR TERMINAL CONNECTION

1	PHASE V
2	BRAKE
4	BRAKE
5	PHASE U
6	PHASE W
FG	FRAME GROUND
CON. CASE	FRAME GROUND



RECEPTACLE SIZE:M23
HOUSING:SF-5EP1N8AAD00S
MAKER:PHOENIX CONTACT

ENCODER TERMINAL CONNECTION



1	PG5V
2	PG0V
3	FRAME GROUND
4	BAT (+)
5	BAT (-)
6	DATA (+)
7	DATA (-)
8	-
CON. CASE	FRAME GROUND

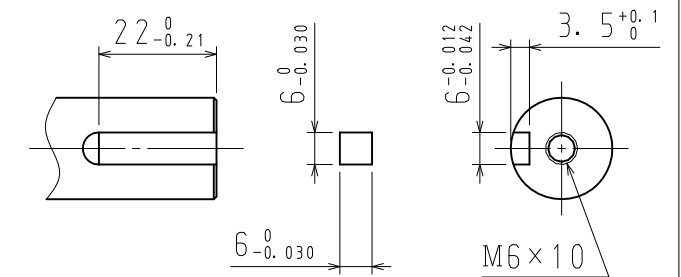
RECEPTACLE SIZE:M12
HOUSING:SACC-MSQ-M12MS
-25-3, 2 SCO
MAKER:PHOENIX CONTACT

NOTES

- ALL DIMENSIONS ARE IN MILLIMETERS.
- MOTOR SPECIFICATIONS :900-172-604
- ENCODER SPECIFICATIONS:900-172-501 (24BIT ABSOLUTE)
- HOLDING BRAKE CANNOT BE USED TO STOP MOTOR.
- VIBRATION:15μm OR BELOW AT RATED SPEED.
- MOTOR CABLE AND ENCODER CABLE ARE OPTIONAL.
- READ AND UNDERSTAND DOCUMENT PACKED WITH MOTOR (SAFETY PRECAUTIONS), AND BE CAREFUL USING MOTOR.
- DEGREES OF PROTECTION:IP67 EXCEPT FOR SHAFT OPENING. MUST USE SPECIFIED CONNECTORS FOR MOTOR.
- AT THE TIME OF DELIVERY OF MOTOR, EACH OF CONNECTORS ARE ATTACHED PROTECTIVE PARTS. PLEASE REMOVE THEM BEFORE ATTACHING CABLES.

- DO NOT TOUCH EACH OF CONNECTOR PINS DIRECTLY. IT CAUSES FAILURE.
- MOTOR CONNECTOR COULD BE TURNED IN THE RANGE OF ☆ WITHIN 10 TIMES.

SHAFT TYPE
(CASE OF ITEM NO. 2)



ITEM NO. 2 SUPPLIES A KEY.

NAME PLATE

ENCODER

HOLDING BRAKE

NAME PLATE

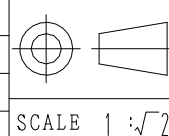
BEARING

DO NOT USE AS FIXATION OF LOAD.

NAME PLATE

RATED OUTPUT (W)	HOLDING BRAKE SPECIFICATIONS			
	MOMENT OF INERTIA GD ² /4 (kg·m ²)	HOLDING TORQUE (N·m)	RATED VOLTAGE	CAPACITY (W)
1000	1.8×10 ⁻⁵	3.18	DC24V ±10%	6.5

ITEM NO.	TYPE	SHAFT TYPE	L (mm)	LL (mm)	LM (mm)	RATED OUTPUT (W)	RATED TORQUE (N·m)	TIME RATING	RATED SPEED (min ⁻¹)	VOLTAGE (Vrms)	RATED CURRENT (Arms)	THERMAL CLASS	WEIGHT (kg)	ALLOWABLE RADIAL LOAD Fr (N)	ALLOWABLE THRUST LOAD Fs (N)
1	SGM7A-10D7F2C	STRAIGHT	218	178	103.5	1000	3.18	CONT.	3000	400 (3PHASE)	3.2	B	3.8	392	147
2	SGM7A-10D7F6C	KEY+TAP													



YASKAWA

DRWN. S. KAMIJO
CHKD. T. HIROSE
APRV. K. AOKI

TITLE AC SERVOMOTOR Σ-7 SERIES
SGM7A MODEL 1000W

DRWN. DATE JUN. 06, '15
DWG. NO. 900-180-731
REV.

SIZE A3