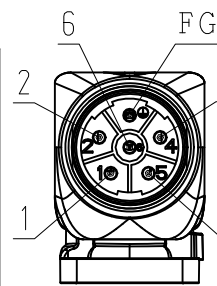


DWG. NO. 900-180-725

RoHS **CE**

MOTOR TERMINAL CONNECTION

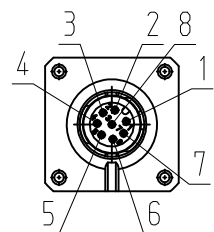
1	PHASE V
2	BRAKE
4	BRAKE
5	PHASE U
6	PHASE W
FG	FRAME GROUND
CON. CASE	FRAME GROUND



VIEW B

RECEPTACLE SIZE:M23
HOUSING:SF-5EP1N8AAD00S
MAKER:PHOENIX CONTACT

ENCODER TERMINAL CONNECTION



VIEW A

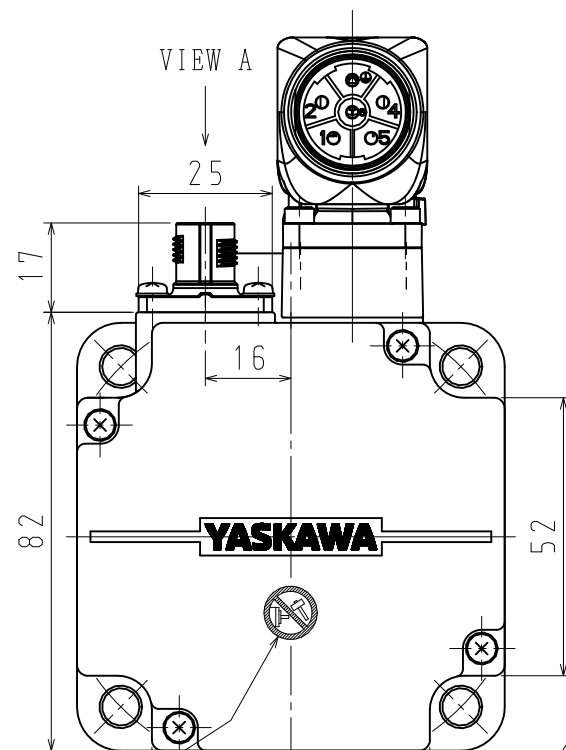
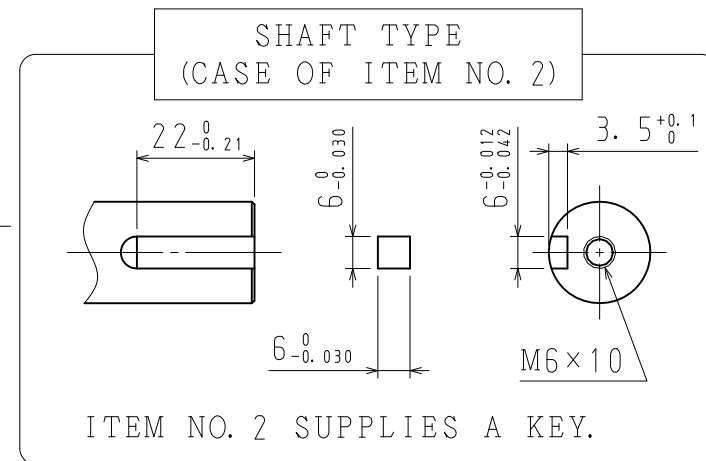
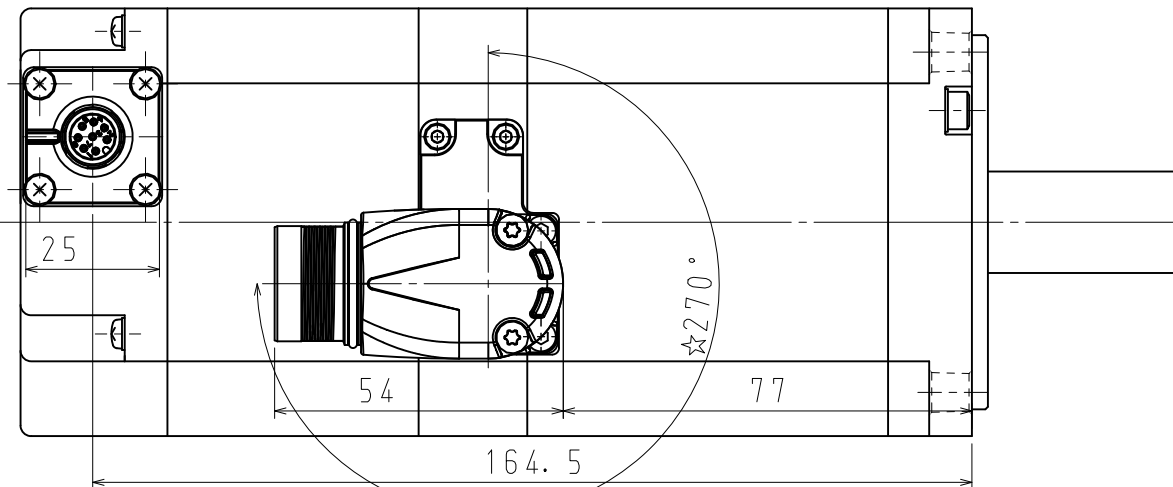
1	PG5V
2	PG0V
3	FRAME GROUND
4	-
5	-
6	DATA (+)
7	DATA (-)
8	-
CON. CASE	FRAME GROUND

RECEPTACLE SIZE:M12
HOUSING:SACC-MSQ-M12MS
-25-3, 2 SCO
MAKER:PHOENIX CONTACT

NOTES

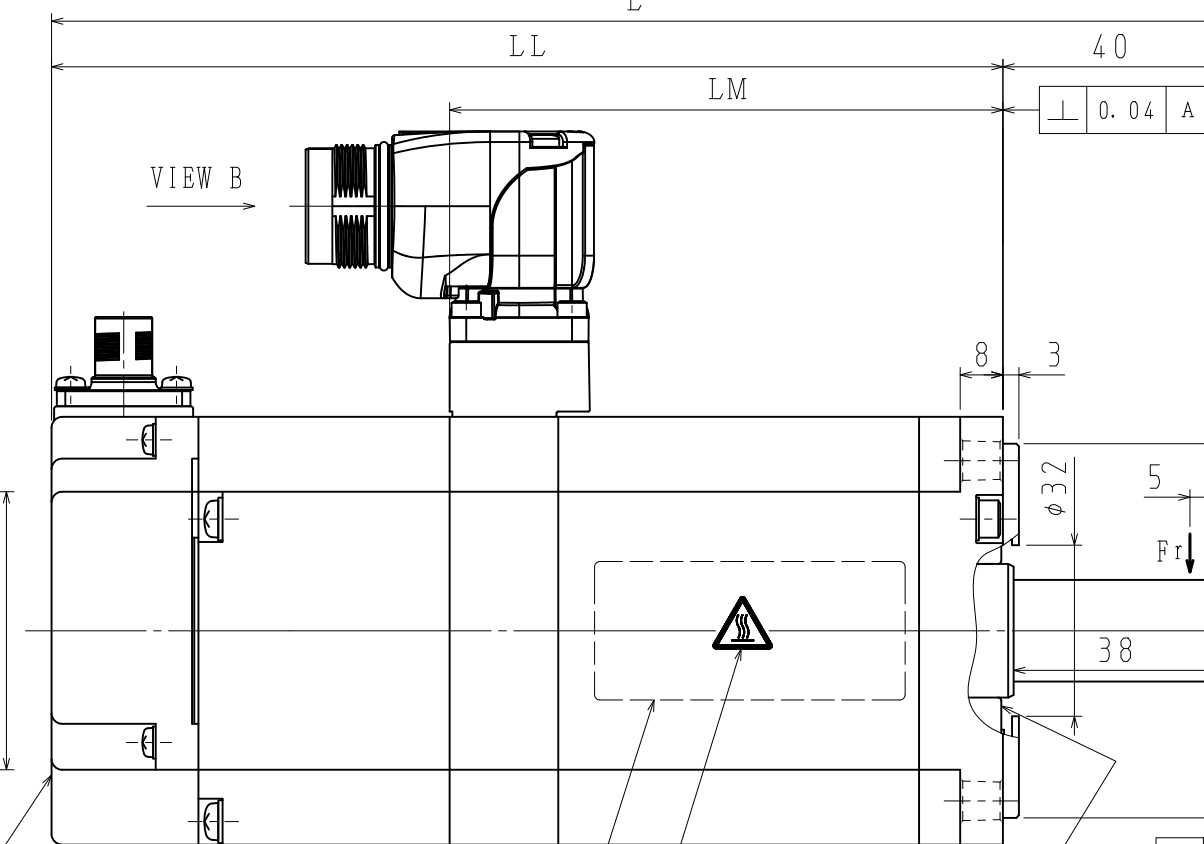
1. ALL DIMENSIONS ARE IN MILLIMETERS.
2. MOTOR SPECIFICATIONS :900-172-604
3. ENCODER SPECIFICATIONS:900-172-502 (24BIT INCREMENTAL)
4. HOLDING BRAKE CANNOT BE USED TO STOP MOTOR.
5. VIBRATION:15 μ m OR BELOW AT RATED SPEED.
6. MOTOR CABLE AND ENCODER CABLE ARE OPTIONAL.
7. READ AND UNDERSTAND DOCUMENT PACKED WITH MOTOR (SAFETY PRECAUTIONS), AND BE CAREFUL USING MOTOR.
8. DEGREES OF PROTECTION:IP67 EXCEPT FOR SHAFT OPENING. MUST USE SPECIFIED CONNECTORS FOR MOTOR.
9. AT THE TIME OF DELIVERY OF MOTOR, EACH OF CONNECTORS ARE ATTACHED PROTECTIVE PARTS. PLEASE REMOVE THEM BEFORE ATTACHING CABLES.

10. DO NOT TOUCH EACH OF CONNECTOR PINS DIRECTLY. IT CAUSES FAILURE.
11. MOTOR CONNECTOR COULD BE TURNED IN THE RANGE OF ☆ WITHIN 10 TIMES.



NAME PLATE

ENCODER

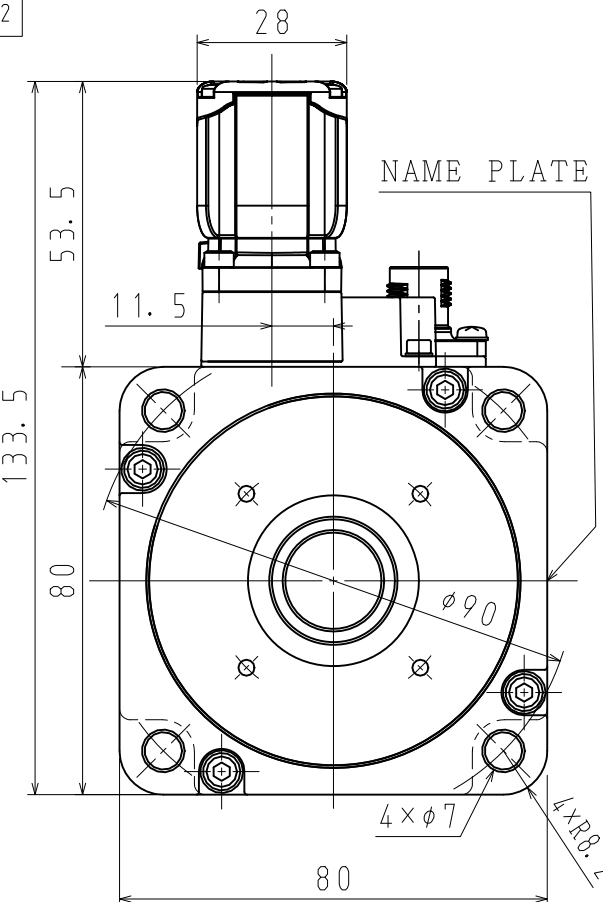
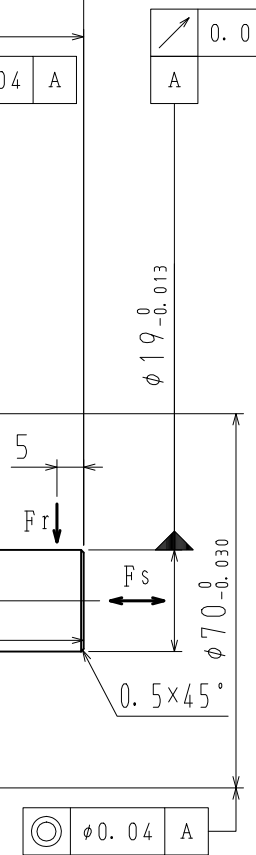


HOLDING BRAKE

NAME PLATE

BEARING

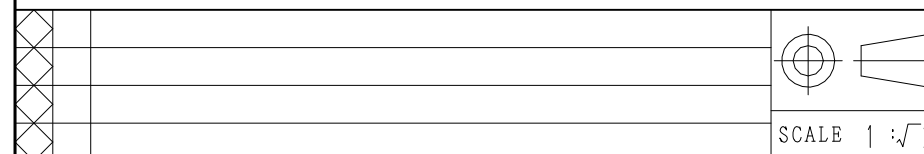
DO NOT USE AS FIXATION OF LOAD.



RATED OUTPUT (W)	HOLDING BRAKE SPECIFICATIONS			
	MOMENT OF INERTIA GD ² /4 (kg·m ²)	HOLDING TORQUE (N·m)	RATED VOLTAGE	CAPACITY (W)
1000	1.8×10 ⁻⁵	3.18	DC24V ±10%	6.5

ITEM NO.	TYPE	SHAFT TYPE	L (mm)	LL (mm)	LM (mm)	RATED OUTPUT (W)	RATED TORQUE (N·m)	TIME RATING	RATED SPEED (min ⁻¹)	VOLTAGE (Vrms)	RATED CURRENT (Arms)	THERMAL CLASS	WEIGHT (kg)	ALLOWABLE RADIAL LOAD Fr (N)	ALLOWABLE THRUST LOAD Fs (N)
1	SGM7A-10DFF2C	STRAIGHT	218	178	103.5	1000	3.18	CONT.	3000	400 (3PHASE)	3.2	B	3.8	392	147
2	SGM7A-10DFF6C	KEY+TAP													

F



YASKAWA

DRWN.	K. ARAI
CHKD.	T. HIROSE
APRV.	K. AOKI

TITLE AC SERVOMOTOR Σ -7 SERIES
SGM7A MODEL 1000W

DRWN. DATE	JUN. 09, '15	REV.	
DWG. NO.	900-180-725		

SIZE A3