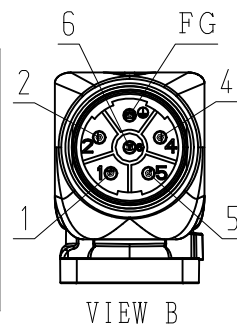


DWG. NO. 900-180-722

RoHS **CE**

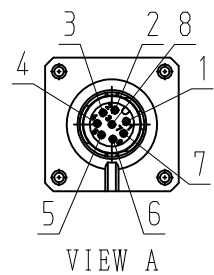
MOTOR TERMINAL CONNECTION

1	PHASE V
2	-
4	-
5	PHASE U
6	PHASE W
FG	FRAME GROUND
CON. CASE	FRAME GROUND



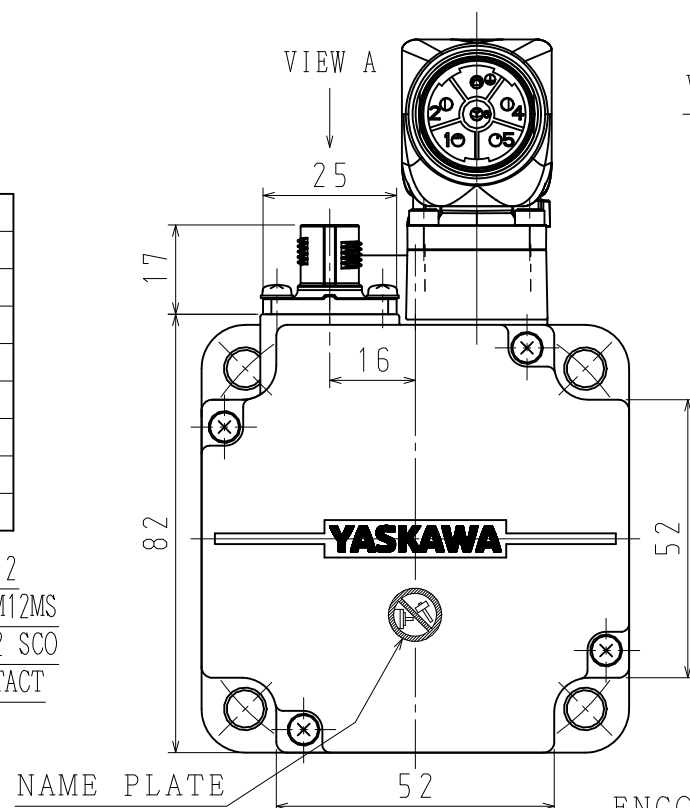
RECEPTACLE SIZE:M23
HOUSING:SF-5EP1N8AAD00S
MAKER:PHOENIX CONTACT

ENCODER TERMINAL CONNECTION

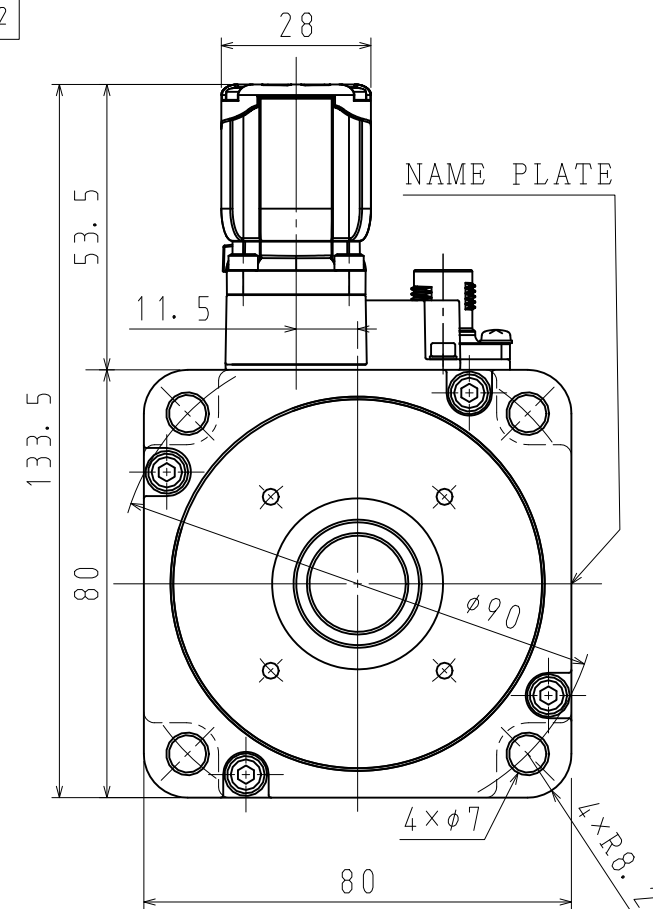
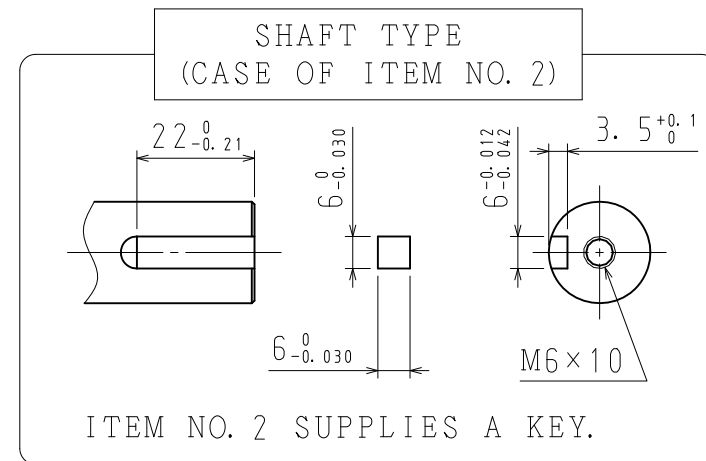
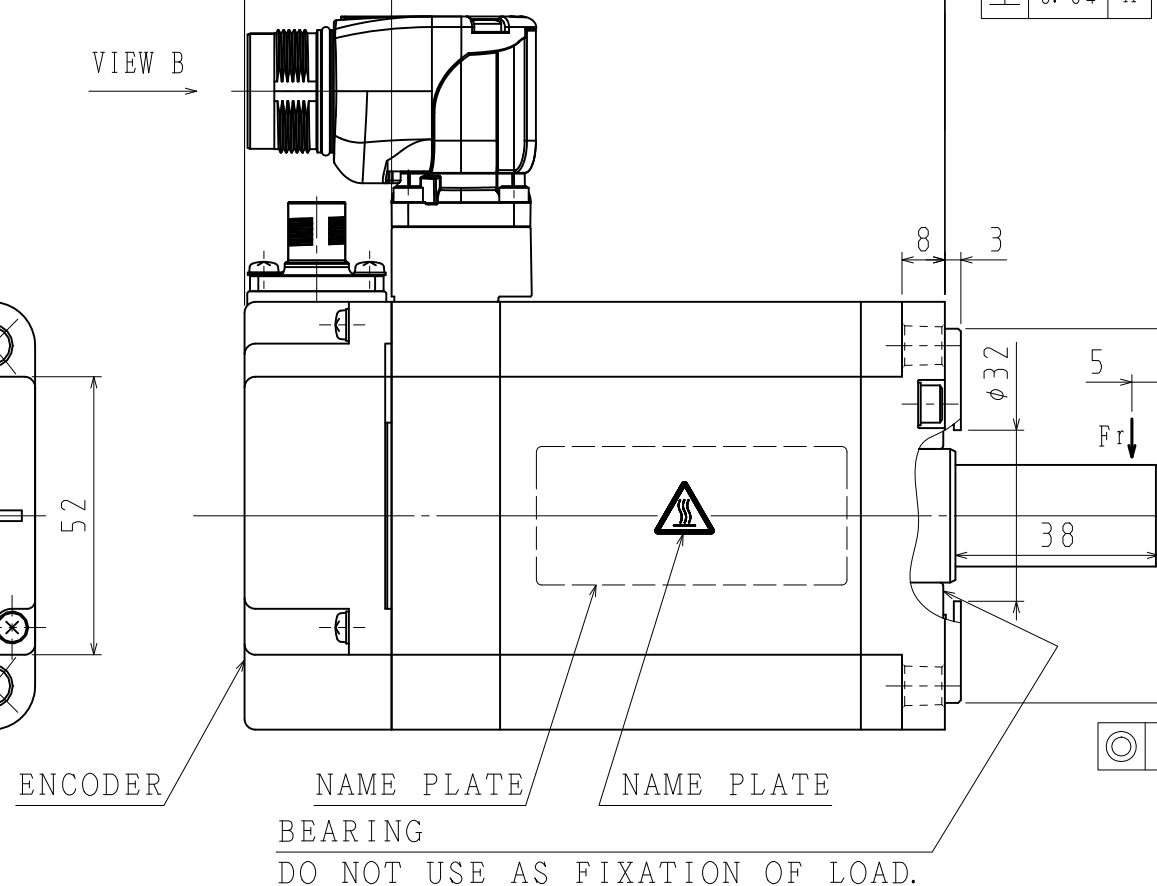
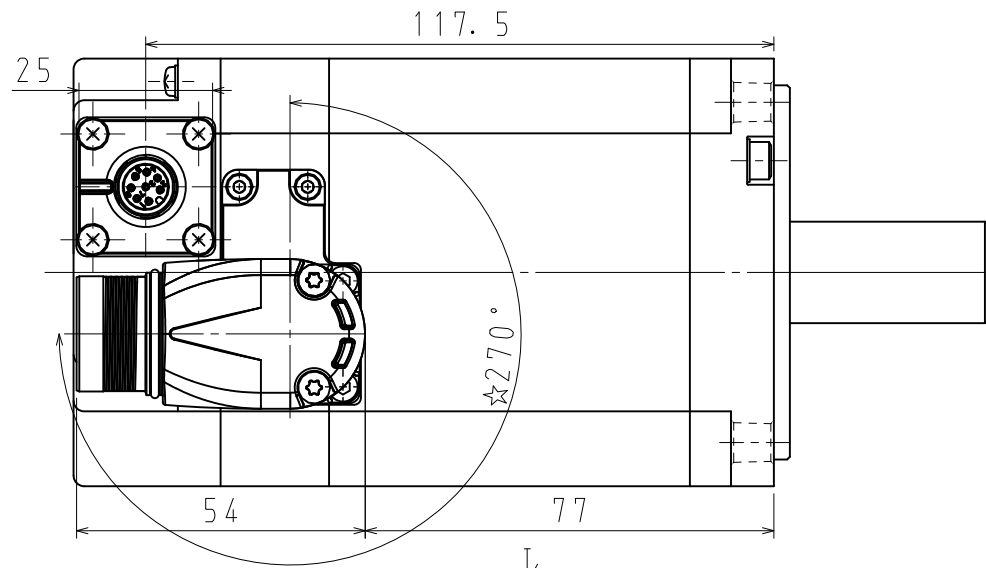


1	PG5V
2	PG0V
3	FRAME GROUND
4	-
5	-
6	DATA (+)
7	DATA (-)
8	-
CON. CASE	FRAME GROUND

RECEPTACLE SIZE:M12
HOUSING:SACC-MSQ-M12MS
-25-3,2 SCO
MAKER:PHOENIX CONTACT



VIEW B



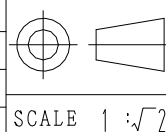
NOTES

1. ALL DIMENSIONS ARE IN MILLIMETERS.
2. MOTOR SPECIFICATIONS :900-172-604
3. ENCODER SPECIFICATIONS:900-172-502 (24BIT INCREMENTAL)
4. VIBRATION:15μm OR BELOW AT RATED SPEED.
5. MOTOR CABLE AND ENCODER CABLE ARE OPTIONAL.
6. READ AND UNDERSTAND DOCUMENT PACKED WITH MOTOR (SAFETY PRECAUTIONS), AND BE CAREFUL USING MOTOR.
7. DEGREES OF PROTECTION:IP67 EXCEPT FOR SHAFT OPENING. MUST USE SPECIFIED CONNECTORS FOR MOTOR.
8. AT THE TIME OF DELIVERY OF MOTOR, EACH OF CONNECTORS ARE ATTACHED PROTECTIVE PARTS. PLEASE REMOVE THEM BEFORE ATTACHING CABLES.

9. DO NOT TOUCH EACH OF CONNECTOR PINS DIRECTLY. IT CAUSES FAILURE.
10. MOTOR CONNECTOR COULD BE TURNED IN THE RANGE OF ☆ WITHIN 10 TIMES.

ITEM NO.	TYPE	SHAFT TYPE	L (mm)	LL (mm)	LM (mm)	RATED OUTPUT (W)	RATED TORQUE (N·m)	TIME RATING	RATED SPEED (min ⁻¹)	VOLTAGE (Vrms)	RATED CURRENT (Arms)	THERMAL CLASS	WEIGHT (kg)	ALLWABLE RADIAL LOAD Fr (N)	ALLWABLE THRUST LOAD Fs (N)
1	SGM7A-10DFF21	STRAIGHT	171	131	103.5	1000	3.18	CONT.	3000	400 (3PHASE)	3.2	B	3.2	392	147
2	SGM7A-10DFF61	KEY+TAP													

DRWN.	K. ARAI	TITLE	AC SERVOMOTOR Σ-7 SERIES	DRWN. DATE	JUN. 09, '15	REV.	
CHKD.	T. HIROSE			DWG. NO.	900-180-722		
APRV.	K. AOKI		SGM7A MODEL 1000W				



YASKAWA

SIZE A3