



YASKAWA

Easy Safety — Safety made easy

You are considering
using an
industrial robot ...



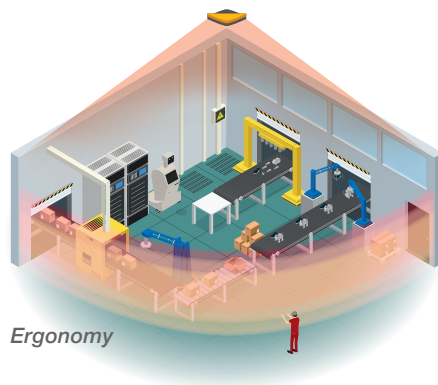
conventional

... or perhaps a
collaborative robot ...



collaborating

... taking ergonomic
factors and
cycle times into
consideration?



Ergonomy



Cycle time

These standards
serve as a guide:

DIN EN ISO 10218-2
DIN EN ISO/TS15066



Then you face the
following challenges:

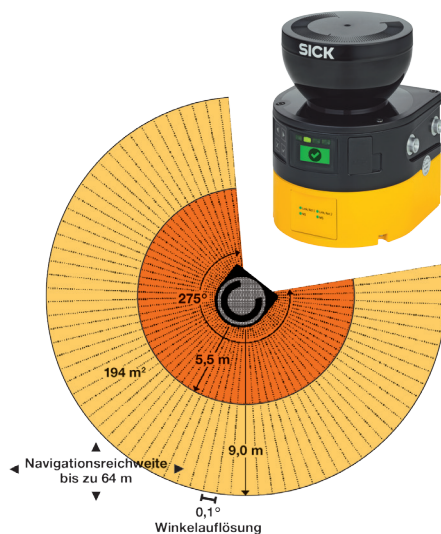
- Risk assessments
- Risk analyses
- Hazard assessment

Do you need
support?

YASKAWA can advise you during the planning phase and support you ...



... in the CE process from defined safety zones to flexible safety concepts.



**THIS IS
DEFINITELY
A SAFE
INVESTMENT!**

What we have to offer

Initial analysis	max. 1 day	1,300 €
Feasibility test and decision-making process	max. 2 days	2,500 €
Support in CE process	min. 5 days / max. 10 days	12,500 €
Crash course in collaborative robot systems – Requirements on the design engineer	1 day (including travel costs)	2,000 €

Start: 1 July 2019

**Ask us today – your YASKAWA Safety team
will provide you with individual expert advice.**

sicherheit@yaskawa.eu.com

Note:
Prices specified are current
trade fair prices and may
change subsequently.

YASKAWA Europe GmbH

Robotics Division
Yaskawastraße 1
85391 Allershausen
Germany

Tel. +49 (0) 8166 90-0
robotics@yaskawa.eu.com
www.yaskawa.eu.com