

MotoEdit

The versatile PC tool for local or remote monitoring, job editing, file transfer and overall support of robot systems



Remote support and maintenance

MotoEdit is an application for remote support, maintenance and live troubleshooting. The tool offers control and detailed access to robot files, variables, and I/O. MotoEdit can be connected on the fly to any system as long as there is a network connection (i.e. VPN) configured.

MotoEdit enables you to monitor job flow in any task, edit robot jobs, view as well as edit variables, I/O and current robot position data. Further features are alarm handling, backup of controller files, and restoration of job files.

The tool offers even access to files that are located on a robot controller connected with a USB-thumb drive. It is also possible to send messages from MotoEdit to the teach pendant of the robot controller, e.g. to notify the robot operator and pendant user that a remote session has started.

KEY BENEFITS

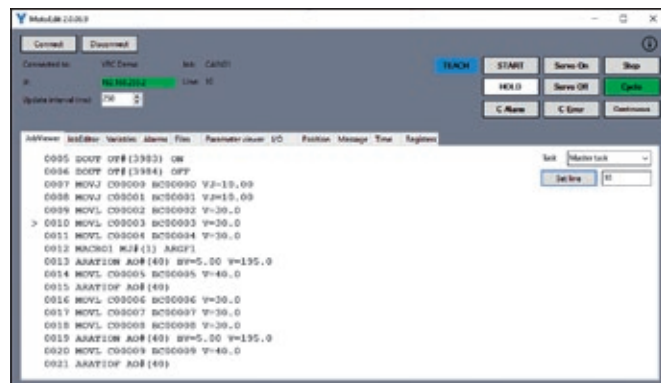
- Live monitoring of robot execution, variable and I/O data
- Remote supervision, support and live troubleshooting
- View and edit robot jobs on the spot
- View and handle robot errors and alarms including alarm history
- Backup of controller files and restore job files
- Robot register data and controller database
- Unlimited number of robot controllers can be handled

COMPATIBLE WITH

- YRC1000
- YRC1000 micro
- DX200
- FS100
- DX100
- NX100*

* limited functionality



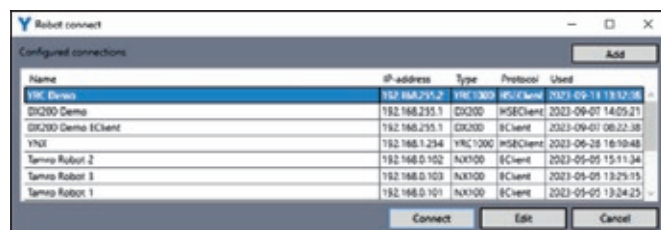


JobViewer

- Monitor the ongoing job flow

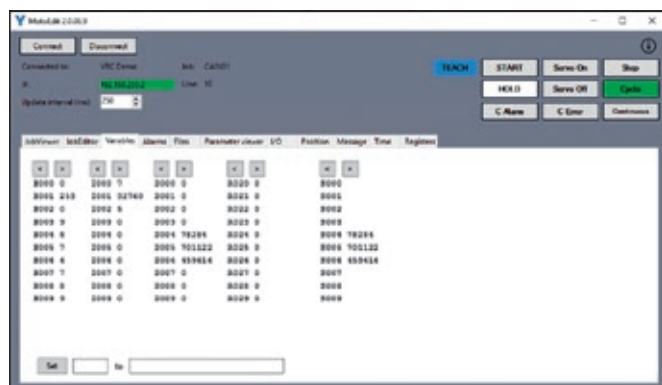
JobEditor

- Edit job files
- Backup of control files
- Backup of external media files (USB)
- Restore job files and external files



Internal Database

- A record of all robot controllers ever connected
- Easy access
- Unlimited number of controllers



Variables

- View variable data (byte, integer, double, real and string)
- Edit variable data

ADDITIONAL FEATURES

- View current and historical alarms
- View parameter settings
- I/O monitoring
- Position monitoring
- Monitoring record
- Robot control: start and stop