

YasXTouch

Remote Maintenance and Scantool



YasXTouch allows the automatic view of fault diagnosis, installation data acquisition and backups via remote access to up to 15 controllers. By means of an additional barcode scanner the articles to be produced can quickly and easily be selected or modified.

KEY BENEFITS

- Quick remote access/troubleshooting
- Linking of up to 15 controllers
- Simple operation via standard network devices
- Flexible product change via barcode scanner

The feature is operated by means of standard network devices with web browser. Access from outside is provided by the customer or by means of additional hardware in order to ensure the safe functioning.

Technical Data

Compatible with the following controller generations:



Power supply:

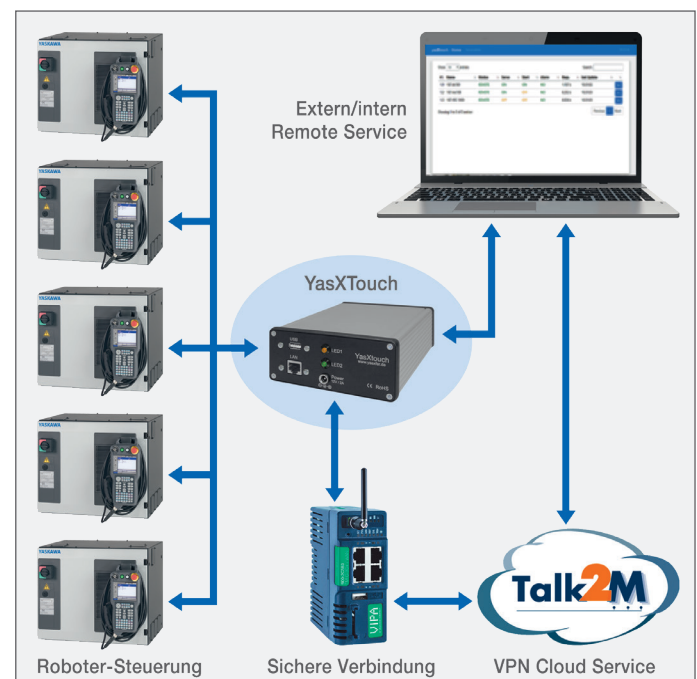
100 V – 240 V, 50 HZ – 60 Hz, Multi adapter

Available menu languages:

German, English, Spanish, French, Portuguese, Italian, Swedish, Czech, Slovenian, Dutch

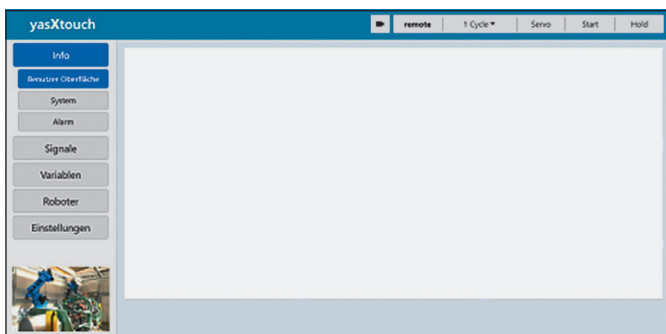
Supported browsers:

Chrome, Firefox, Edge, Internet Explorer



Functions:

Robot Admin menu with IO diagnosis and labeling

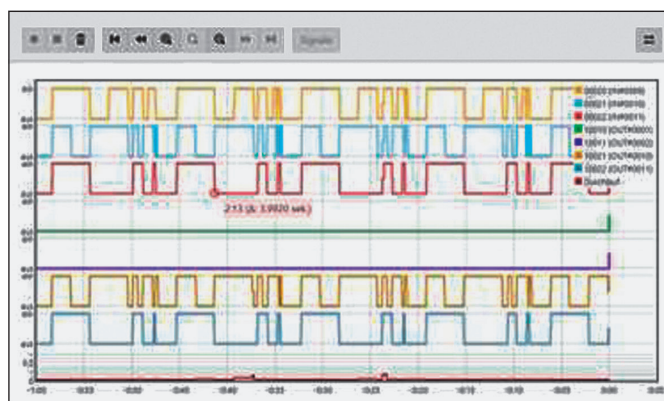


Nr	IN	Kommentar	OUT	Kommentar
1	00010	Test	10010	UNTERJOB
2	00011	rrrr	10011	ZÄHLER RESET
3	00012	16 Beschriftung	10012	
4	00013	Greifler ist Auf	10013	Greifler Auf Ein
5	00014	<>?-[S/\	10014	
6	00015	AAAAAAAAcDREEEI	10015	
7	00016	Ma-0000000000	10016	
8	00017	-!%&'()_+ = ""	10017	
9	00020	IN09	10020	OUT9
10	00021	IN10	10021	OUT10
11	00022	IN11	10022	OUT11
12	00023		10023	
13	00024		10024	
14	00025		10025	
15	00026		10026	
16	00027		10027	

Backup – Restoring with download and FTP

#	Name	Typ
1	IFRUNJOB	JBI
2	TEST2112.JBI	JBI
3	PMACROJBI	JBI
4	MROBMACRJBI	JBI
5	ROBMACROJBI	JBI
6	PARALLELOBBESPIELJBI	JBI
7	1ROBOT12345678.JBI	JBI
8	SYSTEMJOBESPIELJBI	JBI
9	TESTYASXTouch2.JBI	JBI
10	TESTYASXTouch1.JBI	JBI

Logging function

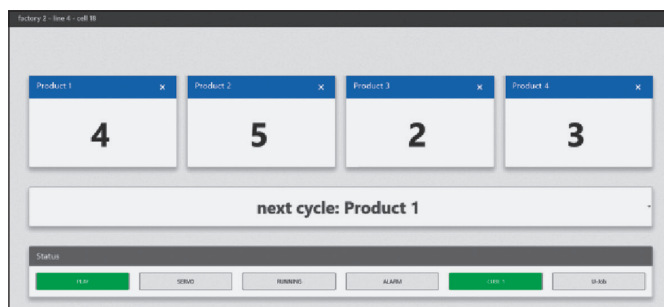


Process diagnosis, Live Job procedure and Job editing

Task	aktueller Job	Zelle	Schritt	Override	Hauptjob
Master	TESTYASXTouch	19	2	100%	
SUB 1	UNTERJOB	1	0	100%	
SUB 2	UNTERJOB2	1	0	100%	
SUB 3	UNTERJOB3	1	0	100%	
SUB 4	UNTERJOBDAUER	7	0	100%	
SUB 5					
SUB 6					
SUB 7					

Task: Master / Job: UIMAINJOB	
Job Name:	UIMAINJOB
Jobtyp:	Arbeitsjob
letzte Änderung:	08.10.2018 13:52
0000	NOP
0001	SET S000 ""
0002	SET S001 ""
0003	DOUT OT#(1) OFF
0004	*AUTO
0005	SET S001 ""
0006	TIMER T=0.20
0007	CALL JOB:UPRODUCT1 IF S000="Product 1"
0008	CALL JOB:UPRODUCT2 IF S000="Product 2"
0009	CALL JOB:UPRODUCT3 IF S000="Product 3"
0010	CALL JOB:UPRODUCT4 IF S000="Product 4"
0011	JUMP *AUTO
0012	END

HMI (Human Machine Interface) function



Please contact TCS Service Sales:

Tel. +49 (0) 8166 90 - 2002, Fax +49 (0) 8166 90 - 225
tcs-sales@yaskawa.eu

Yaskawa Headquarters

Yaskawa Europe GmbH · Robotics Division
Yaskawastraße 1 · D-85391 Allershausen, Germany
Tel. +49 (0) 8166/90-0 · Fax +49 (0) 8166/90-103

robotics@yaskawa.eu
www.yaskawa.eu

Yaskawa Academy and sales office Frankfurt

Yaskawa Europe GmbH · Robotics Division
Philipp-Reis-Straße 6 · D-65795
Hattersheim am Main, Germany
Tel. +49 (0) 6196/77725-0 · Fax +49 (0) 6196/77725-39

We reserve the right to technical changes and error.
C-03-2024, A-No. 201288