

DWG.NO. HW1382071

This drawing is applicable with following type

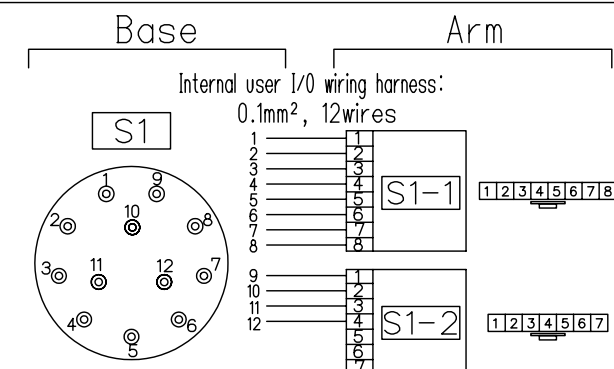
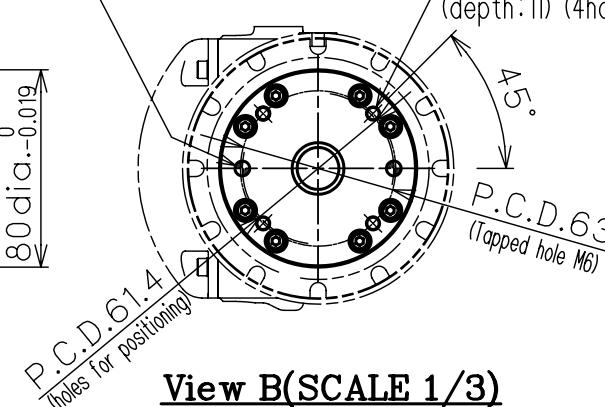
Type	Note
YR-SIA010D-A11	Drip proof specification with water proof flange.・DX100
YR-SIA010F-A11	Drip proof specification with water proof flange.・FS100

Connectors for internal user I/O wiring harness:
51216-0800,51216-0700

Prepare: 51227-0800,51227-0700 *MOLEX*

11 (Usable dimension: 80 dia. -0.019)

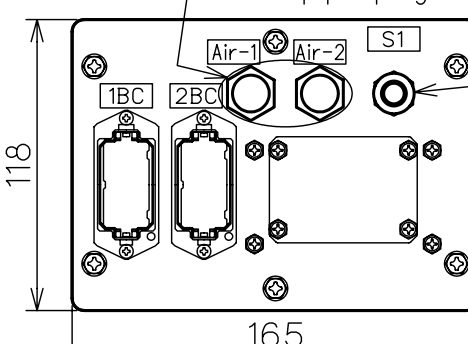
6 dia. $+0.012$ (depth:10) (2holes) Tapped hole M6
(depth:11) (4holes)



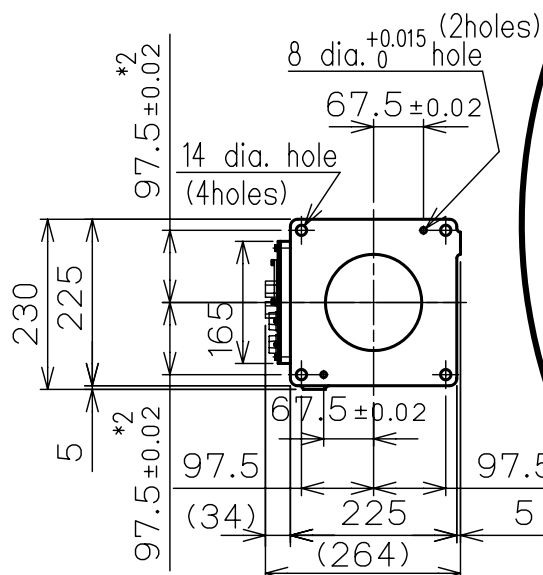
Connectors for internal user I/O wiring harness
(Pin Details)

Connectors for internal user I/O wiring harness:
LF10WBRB-12P (Pin connector)
Prepare socket connector:
LF10WBP-12S*HIROSE*

Air Inlet (2 inlets):
Tapped hole PT3/8
with a pipe plug



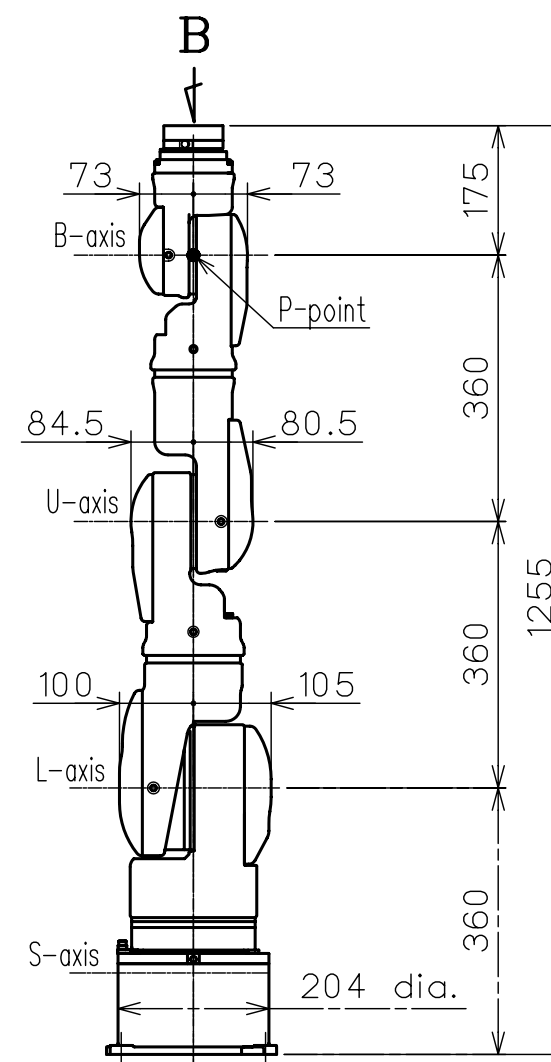
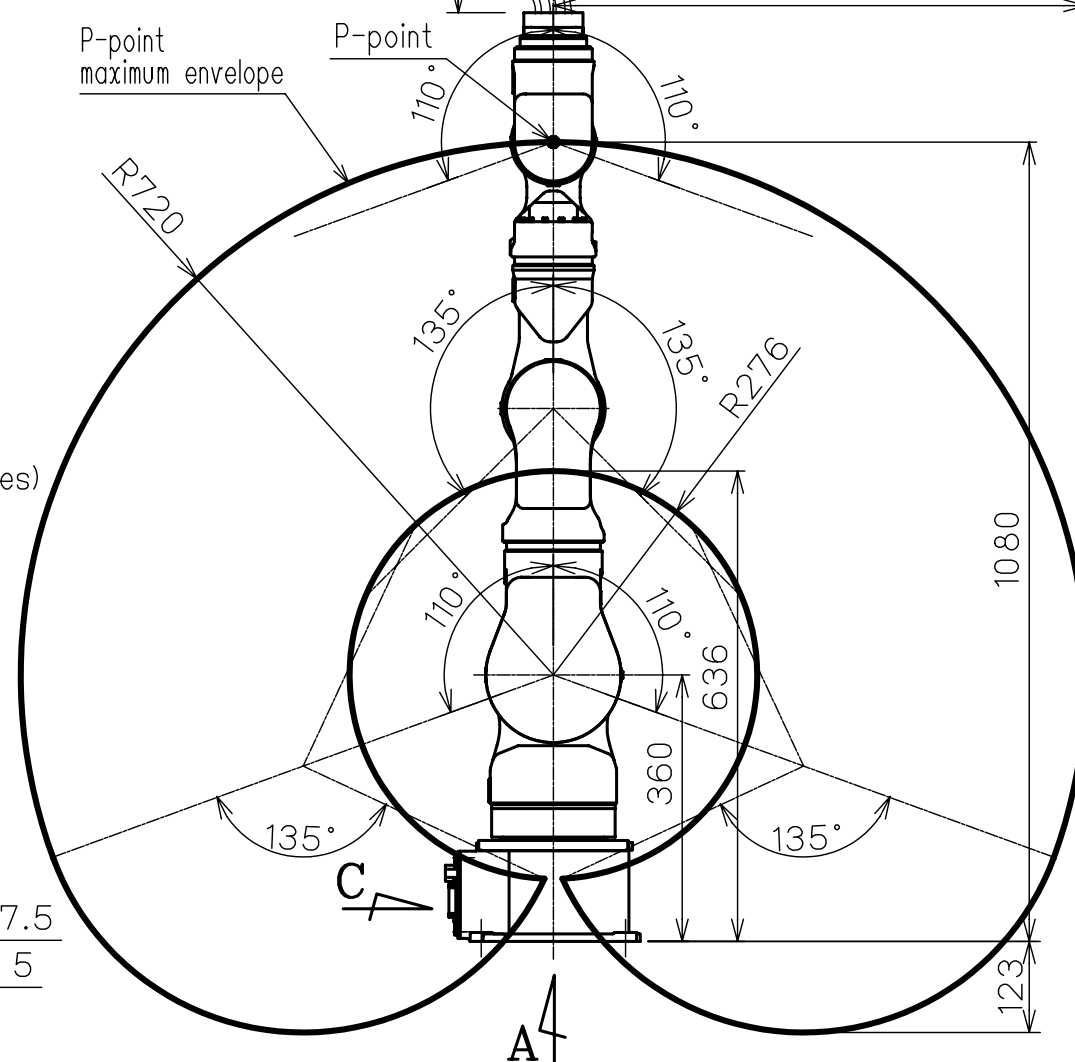
View C (SCALE 1/3)



*2: Tolerance shall be applied

View A

P-point
maximum envelope



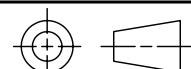
Item	Model	MOTOMAN-SIA10D,SIA10F
Configuration		Vertically Articulated
Degree of Freedom		7 axes
Payload		10kg
Repetitive Positioning Accuracy*1		±0.1mm
Range of Motion	S-axis	-180° - +180°
	L-axis	-110° - +110°
	E-axis	-170° - +170°
	U-axis	-135° - +135°
	R-axis	-180° - +180°
	B-axis	-110° - +110°
	T-axis	-180° - +180°
Maximum Speed	S-axis	2.97rad/s (170°/s)
	L-axis	2.97rad/s (170°/s)
	E-axis	2.97rad/s (170°/s)
	U-axis	2.97rad/s (170°/s)
	R-axis	3.49rad/s (200°/s)
	B-axis	3.49rad/s (200°/s)
	T-axis	6.98rad/s (400°/s)
Allowable Moment	R-axis	31.4N·m (3.2kgf·m)
	B-axis	31.4N·m (3.2kgf·m)
	T-axis	19.6N·m (2.0kgf·m)
Allowable Inertia (GD ² /4)	R-axis	1.0kg·m ²
	B-axis	1.0kg·m ²
	T-axis	0.4kg·m ²
Mass		60kg
Ambient Conditions	Temperature	0-40 °C
	Humidity	20-80%RH at constant temperature
	Vibration acceleration	4.9m/s ² (0.5G) or less
	Others	・Free from corrosive gas or liquid, or explosive gas ・Free from exposure to water,oil,or dust ・Free from excessive electrical noise(plasma)
Power Capacity	DX100	1.5 kVA
	FS100	1.0 kVA

SI units are used in this table.
However, gravitational unit is used in ().
*1: Conformed to ISO9283

The drip-proof specification has a hole on its wrist flange to pass cables as with the standard specification. When mounting equipment such as attachment, perform drip-proof treatment on the flange surface.
The optional waterproof wrist flange is available.
<NOTE> The connectors for internal user I/O wiring harness are not drip-proofed; depending on the ambient conditions, perform drip-proof treatment after connecting the wiring harness. (E.g., treating the connections with water-proof tape, or connecting the wiring harness inside the drip-proof box.)

FOR STUDY PURPOSE ONLY

Note:
1. All rights reserved.
2. Please note that the data is subject to be deleted without advance notice.
3. No warranty is given in relation to the data including the specification.
4. We are not responsible for any damages or loss caused by the use of the data.



SCALE 1 : 10

YASKAWA

株式会社 安川電機

Reference Drawing

TITLE MOTOMAN-SIA10D,SIA10F
DIMENSION DIAGRAM

DWG.NO.

HW1382071

SIZE A 3