

YASKAWA

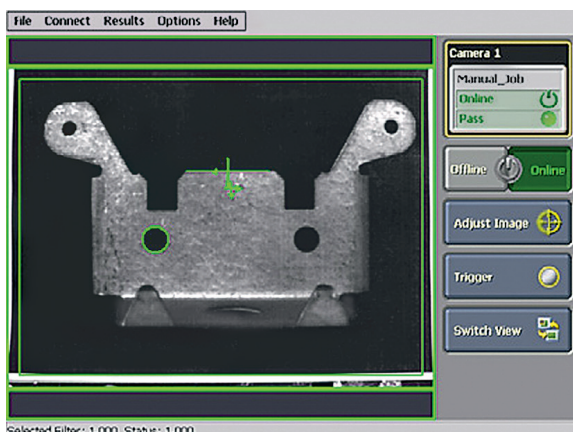
CAMERA & SOFTWARE

MOTOSIGHT2D

YASKAWA Vision System

The new MotoSight2D Vision combines leading vision technology with leading robotic technology. The MotoSight2D product range is based on compact 2D cameras in 3 different performance classes. In addition to simple data exchange, programming of the camera

from the teach pendant of the robot is also possible. The tool set of the camera covers a wide range of camera applications, from Pick&Place applications to quality monitoring tasks. Of particular note here is the patented Patmax algorithm, the benefits of which are exploited to the full in typical Pick&Place applications.



KEY BENEFITS

Camera:

- Direct communication with software MotoSight2D
- High speed and resolution
- Flexible mounting (on robot or free standing)
- Several equipment available

Software:

Software:

- Monitoring of up to 4 cameras
- Display camera image (live) on robot teach pendant
- Simple assignment of vision results to robot variables
- Storage of current jobs and images

Controlled by
DX200

YASKAWA Vision System

Equipment (Base Camera Kit)

Scope of supply:

- Camera (MS100, MS200, MS300)
- MotoSight2D Software

Other necessary components:

- Lens
- Ethernet and power cable

Features

Pendant Features:

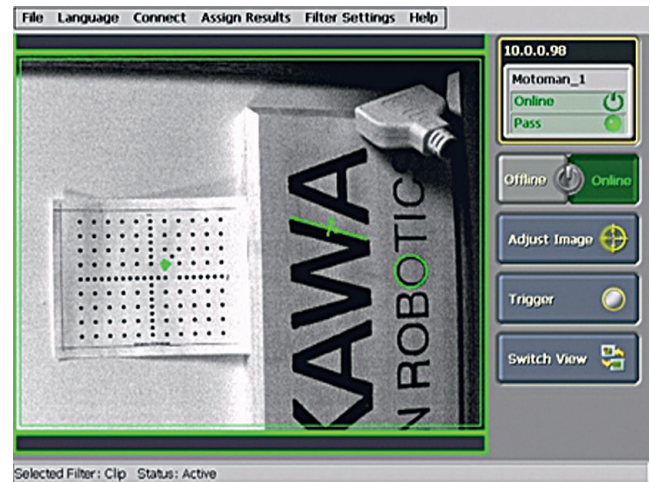
- Monitor and change on-line camera status
- Display pass/fail status
- Auto Display most recent camera image
- Display graphic overlays on captured image
- Calibrate camera using pendant
- Teaching of vision application

Communication:

- DX100, DX200 and FS100 controllers communicate directly with MotoSight2D camera over Ethernet

Vision Features:

- Easy Builder and Spreadsheet
- Advanced option includes vision operator interface to view images from camera system
- High-resolution cameras available



| Technical data YASKAWA Cameras | | | | |
|--------------------------------|-------------|-----------------|--------------|---|
| Model | Resolution | Processor Speed | Frame/Second | Vision Tools |
| MS100 | 800 x 600 | 1 x Base model | 102 | Limited Tool Set Pattern, Edge, Blob, Circle, Curve, Histogram, Geometry, Image Filters, Standard Calibration (9-Points) |
| MS200 | 800 x 600 | 3 x Base model | 102 | Full Tool Set Pattern, Edge, Blob, Circle, Curve, Histogram, Geometry, Image Filters, Standard Calibration (9-Points) PatMax (Geometric pattern matching technology), Advanced Calibration (non-linear calibration), and caliper tool, OCR, OCV; 2D Matrix and Barcode reading |
| MS300 | 1280 x 1024 | 6 x Base model | 60 | High Resolution & Full Tool Set Pattern, Edge, Blob, Circle, Curve, Histogram, Geometry, Image Filters, Standard Calibration (9-Points) PatMax (Geometric pattern matching technology), Advanced Calibration (non-linear calibration), and caliper tool, OCR, OCV; 2D Matrix and Barcode reading |



Please request detailed drawings at robotics@yaskawa.eu.com – YASKAWA Vision System, B-05-2015, A-No. 169190

YASKAWA

robotics@yaskawa.eu.com
www.yaskawa.eu.com

YASKAWA Headquarters

YASKAWA Europe GmbH · Robotics Division
Yaskawastraße 1 · D-85391 Allershausen
Tel. +49 (0) 8166/90-0 · Fax +49 (0) 8166/90-103

YASKAWA academy and sales office Frankfurt

YASKAWA Europe GmbH · Robotics Division
Hauptstraße 185 · D-65760 Eschborn
Tel. +49 (0) 6196/77725-0 · Fax +49 (0) 6196/77725-39